

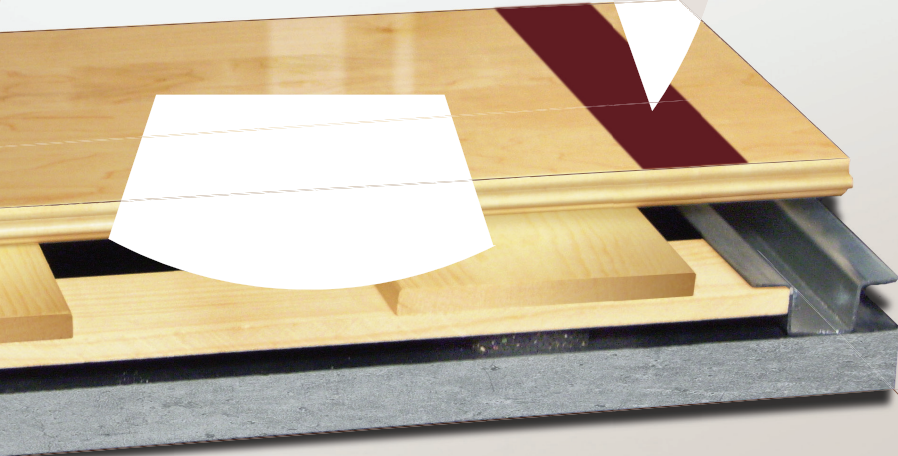


AACER

SPORTS FLOORING

UltraChannel DC

UltraChannel DC is a solid wood fixed resilient floor system designed to produce high performance while maintaining a stable platform. The fixed resilient design has enabled UltraChannel to produce high levels of force reduction while uniquely controlling deformation.



see us at
Sweets.com



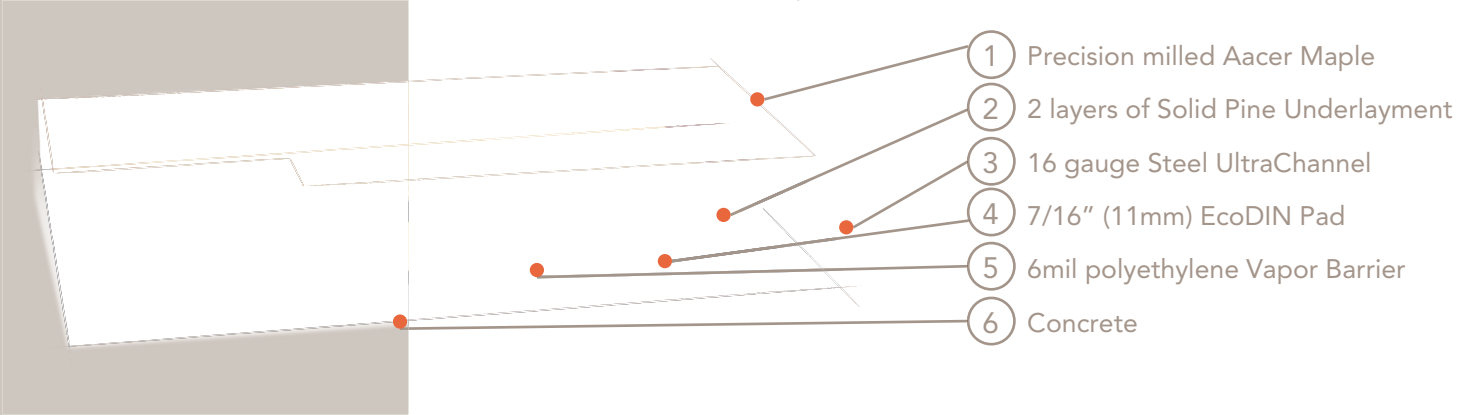
The mark of responsible forestry

FIXED RESILIENT



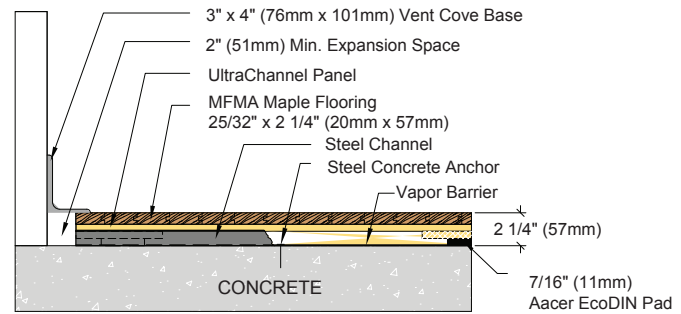
UltraChannel DC

Designed for the highest level of performance, UltraChannel's unique fixed resilient design enables an unparalleled combination of comfort and play in a stable floor system.

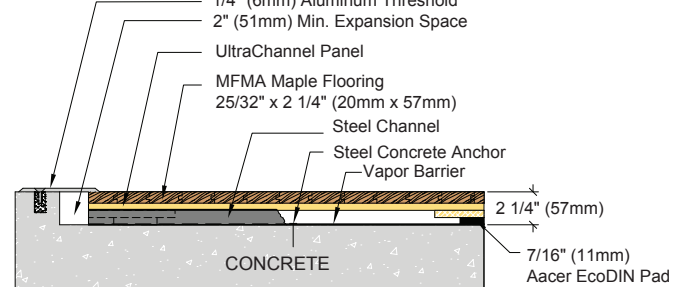


Anchorage	Steel Channel
Certified	
Green Status LEED Contributors	<p>FSC® Certified Maple - MRc7 FSC® Certified SubFloor Components - MRc7 EQ - 4.2 Regional Materials - MRc5.1 & 5.2</p>
Optional Versions	PowerVent™ Airflow System
Resilience	EcoDIN Pads, 1/2" TriPower™ Pads
Slab Depression	7/16" (11mm) EcoDIN Pads 25/32" (20mm) flooring - 2 1/4" (57mm) 33/32" (26mm) flooring - 2 1/2" (64mm)
Subfloor Construction	Solid Pine
System Type	Fixed Resilient
Testing Laboratory	
Warranty	Lifetime available

WALL BASE



THRESHOLD



EQUIPMENT

