

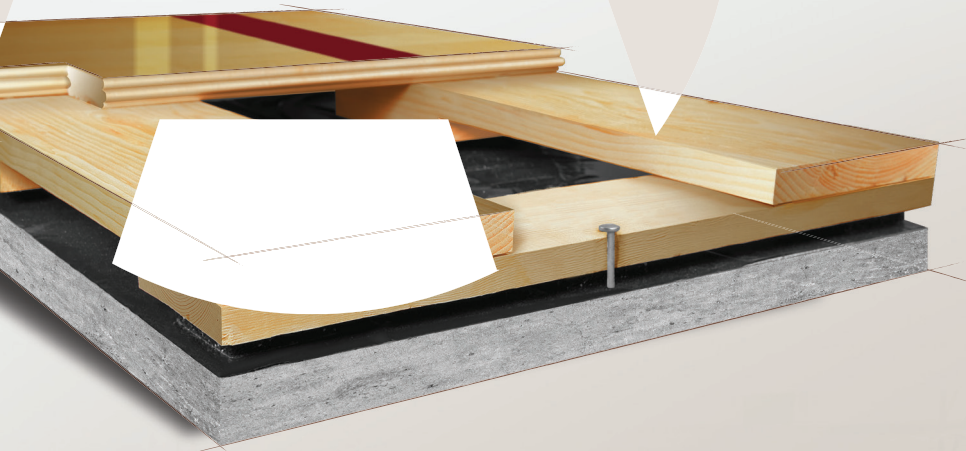


AACER

SPORTS FLOORING

UltraFlex™ DC

UltraFlex™ DC is an anchored resilient floor system combining the best features of both designs. UltraFlex™ DC features a unique ladder subfloor that provides high performance play and a stable platform for the maple surface. This system, when selected with fully FSC® Certified components, contributes the maximum LEED points available.



see us at
Sweets.com

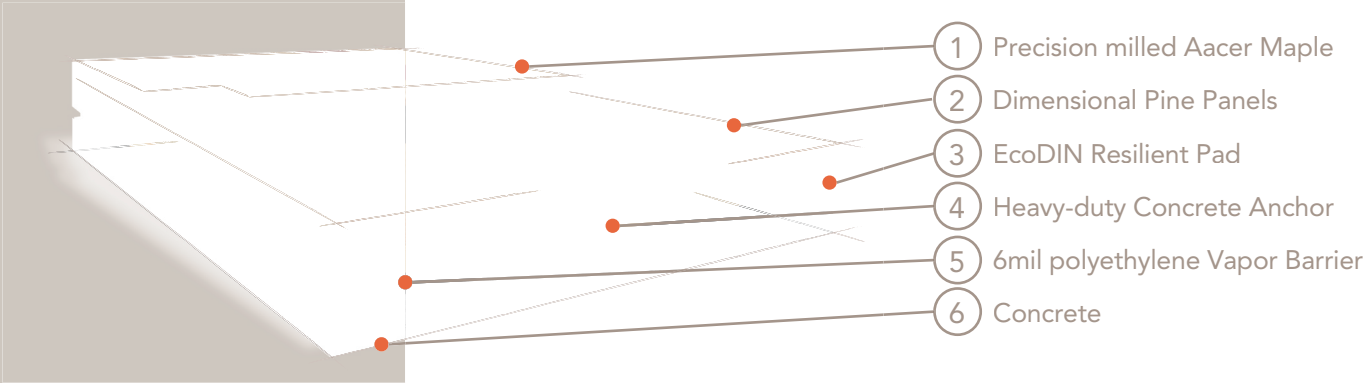


FIXED RESILIENT

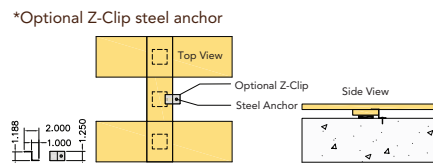


UltraFlex™ DC

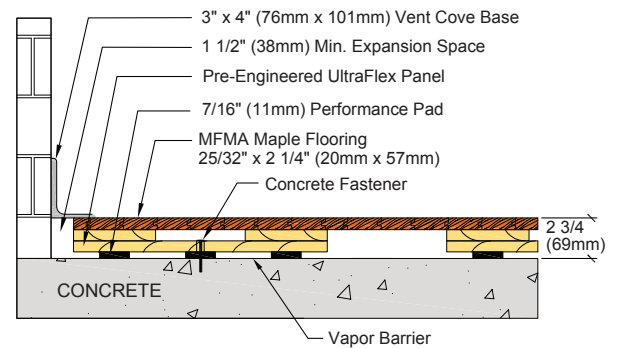
The UltraFlex™ DC system utilizes dimensional wood subfloor which absorbs shock and reduces leg fatigue. The subfloor design also allows for excellent under floor air flow.



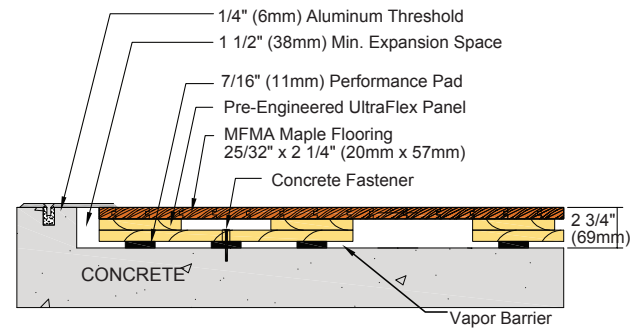
Anchorage	Drill & Pin / Z-Clip Retainer
Certified	
Green Status LEED Contributors	<p>FSC® Certified Maple - MRC7 FSC® Certified SubFloor Components - MRC7 EQ - 4.2 Regional Materials - MRC5.1 & 5.2</p>
Optional Versions	PowerVent™ Airflow System
Resilience	EcoDIN Pads, TriPower™ Pads
Slab Depression	<p>7/16" (11mm) EcoDIN Pads, 1/2" (12mm) Performance Foam or TriPower™ Pads 25/32" (20mm) flooring - 2 3/4" (71mm) 33/32" (26mm) flooring - 3" (78mm)</p> <p>3/4" (19mm) TriPower™ Pad 25/32" (20mm) flooring - 3" (78mm) 33/32" (26mm) flooring - 3 1/4" (84mm)</p>
Subfloor Construction	Solid Dimensional Pine (FSC)
System Type	Fixed Resilient / Floating
Testing Laboratory	
U.S. Patent#	UltraFlex DC with Clip U.S. Patent #5,526,621 UltraFlex DC with Pin U.S. Patent #6,557,314 B2
Warranty	Lifetime available
*Option	Retrofit with optional Z-Clip steel anchor



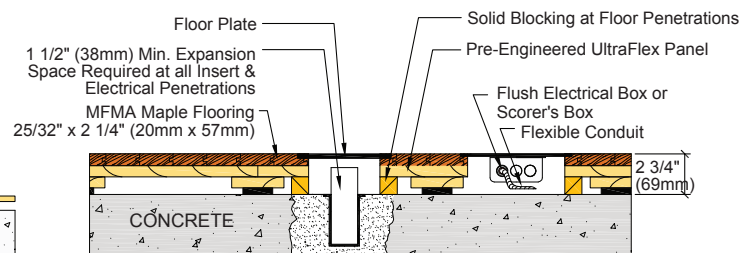
WALL BASE



THRESHOLD



EQUIPMENT



AacerFlooring.com

(877) 582-1181

It is the policy of Aacer Flooring to continuously improve its line of products. Therefore, Aacer Flooring reserves the right to change, modify or discontinue systems, specifications and accessories of all products at any time without notice or obligation to purchaser.

October 2014