





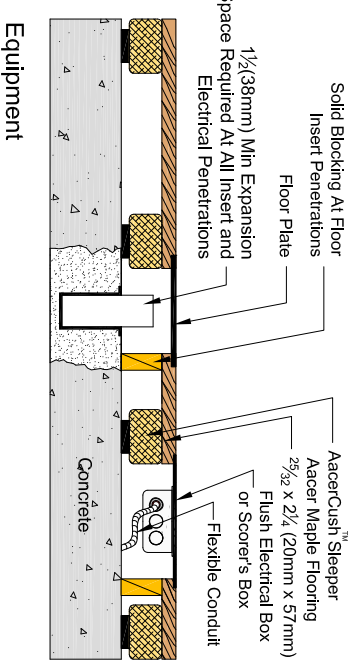
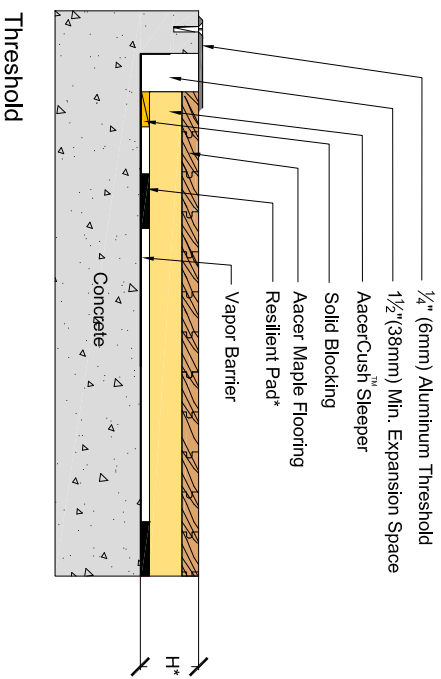
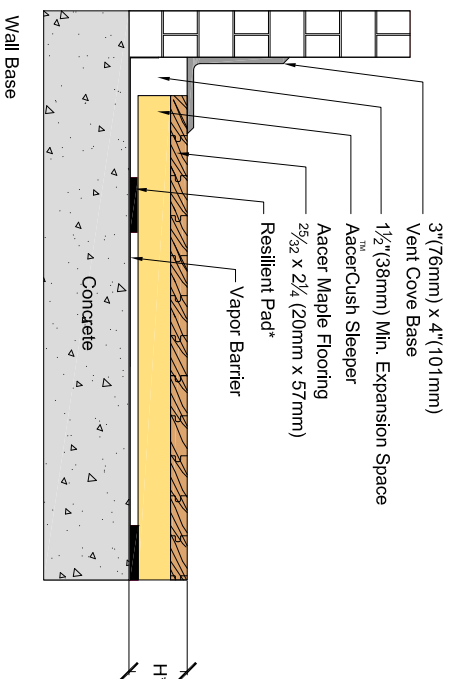


AacerCush I

Resilient Pad Option*	Pad Description	Profile Height(H*)
	3/4" (19mm) T1H-Power Pad, Available in 3 ASTM Harnesses - 50, 60, 70	3" (76mm)
	3/4" (19mm) Aacer Flex	3" (76mm)
	5/8" AacerCush Pad	2 7/8" (73mm)
	1/2" (12mm) T1H-Power Pad, ASTM Harness 55	2 3/4" (70mm)
	7/8" (11mm) EodIn	2 3/4" (70mm)
	3/8" (10mm) AacerCush	2 5/8" (67mm)

* Refer to key for pad options and system heights



Equipment

REVISIONS

Description	Date	Who

Aacer Flooring LLC
970 Ogden Rd
Peshigo, WI 54157

Phone: 715-582-1181
Fax: 715-582-1182

AacerCush I



DESCRIPTION:	AacerCush I
PART NUMBER:	n/a
SCALE:	n/a
DATE:	3-24-2015
DRAWN BY:	S Daniel
CHECKED BY:	

FILE:	AacerCush1
SHEET:	1