

ScissorLoc™ II

FLOATING SYSTEMS

ScissorLoc II is a dimensionally stable system with excellent natural ventilation capabilities due to its criss-cross, solid wood subfloor design.

ScissorLoc II can withstand heavier loads because of its ability to adjust to the contour of the floor.

PowerVent™ Airflow system is a popular accompaniment to the ScissorLoc series. The system can detect moisture and start drying the floor system with mechanical airflow.



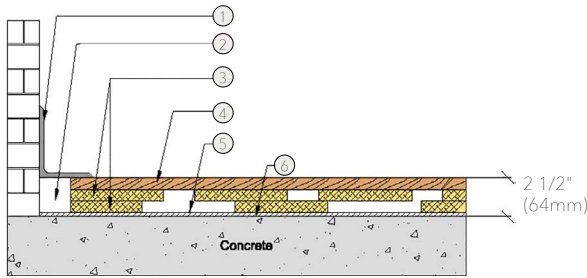
ScissorLoc™ II

Available ScissorLoc™ Floor Systems: I, II, III, DC and LP



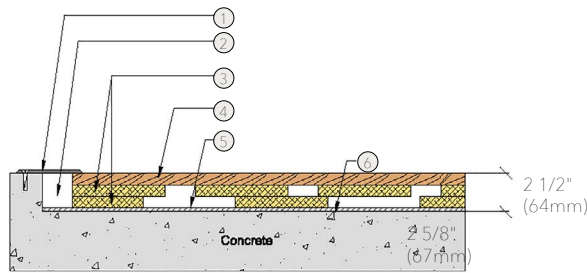
- 1. Precision-milled Acer Maple
- 2. 1" x 6" (19mm x 140mm) Dimensional Pine
- 3. 1" x 6" (19mm x 140mm) Dimensional Pine
- 4. 1/4" (6mm) Performance Foam
- 5. 6 mil Polyethylene Vapor Barrier
- 6. Concrete

WALL BASE



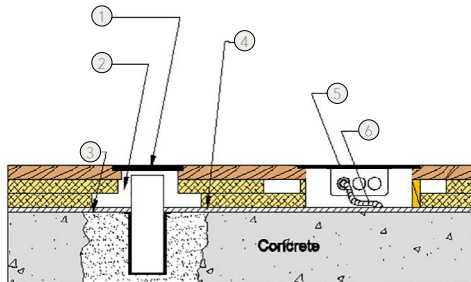
- 1. 3" x 4" (76mm x 101mm) Vent Cove Base
- 2. 1 1/2" (38mm) Min. Expansion Space
- 3. (2) Layers 1" x 6" (19mm x 140mm) Dimensional Pine
- 4. MFMA Maple Flooring 25/32" x 2 1/4" (20mm x 57mm)
- 5. 1/4" (6mm) Performance Foam
- 6. Vapor Barrier

THRESHOLD



- 1. 1/4" (6mm) Aluminum Threshold
- 2. 1 1/2" (38mm) Min. Expansion Space
- 3. (2) Layers 1" x 6" (19mm x 140mm) Dimensional Pine
- 4. MFMA Maple Flooring 25/32" x 2 1/4" (20mm x 57mm)
- 5. 1/4" (6mm) Performance Foam
- 6. Vapor Barrier

EQUIPMENT



- 1. Floor Plate
- 2. 1 1/2" (38mm) Min. Expansion Space Required at all Insert & Electrical Penetrations
- 3. Vapor Barrier
- 4. 1/4" (6mm) Performance Foam
- 5. Flush Electrical Box or Scorer's Box
- 6. Flexible Conduit

Certified



Green Status and LEED Contributors



- FSC® Certified Maple - MRC7
- FSC® Certified Subfloor Components - MRC7
- EQ - 4.2
- Regional Materials - MRC5.1 & 5.2

Optional Versions

I, II, III, DC, LP

Resilience

1/4" Performance Foam
*Other pad options available.
Contact your Regional Sales Manager.

Optional Accessory

PowerVent™

Slab Depression

ScissorLoc™ II
• 25/32" (20mm) flooring - 2 1/2" (64mm)
• 33/32" (26mm) flooring - 2 3/4" (70mm)

Optional Construction

Contact your Regional Sales Manager for system configurations.

Subfloor Construction

Solid Pine

System Type

Floating

Testing Laboratory



U.S. Patent #

#5,299,401

Warranty

Lifetime available

It is the policy of Aacer Flooring to continuously improve its line of products. Therefore, Aacer Flooring reserves the right to change, modify or discontinue systems, specifications and accessories of all products at any time without notice or obligation to purchaser.



see us at Sweets.com

