



# AACER

SPORTS FLOORING

## AacerChannel®

A high performance sports floor system with the resiliency and safety of a floating floor and the stability of an anchored system. This unique combination is ideal for large field houses and combination wood and synthetic facilities.



see us at  
[Sweets.com](http://Sweets.com)

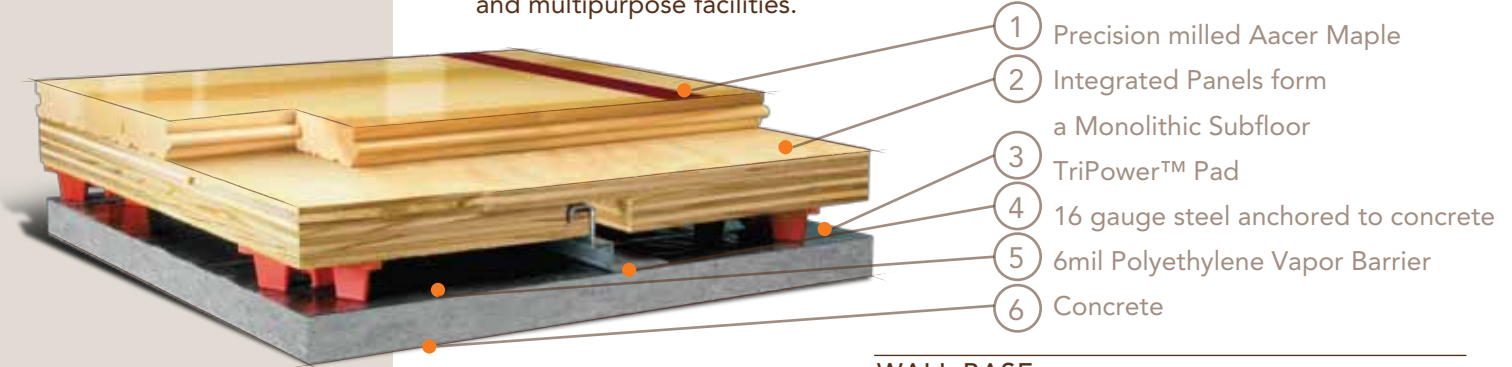


# FIXED RESILIENT

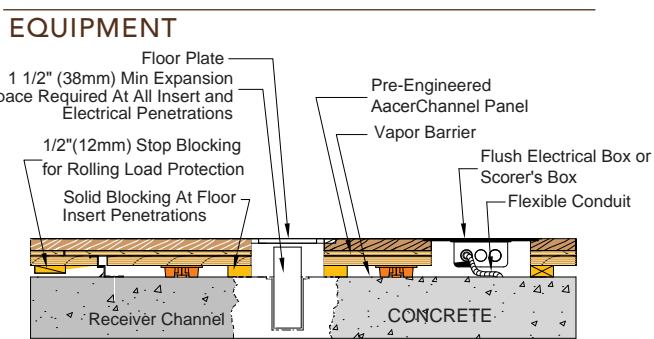
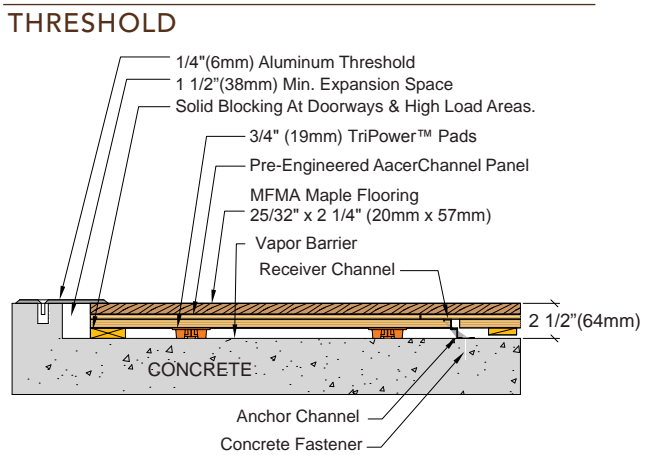
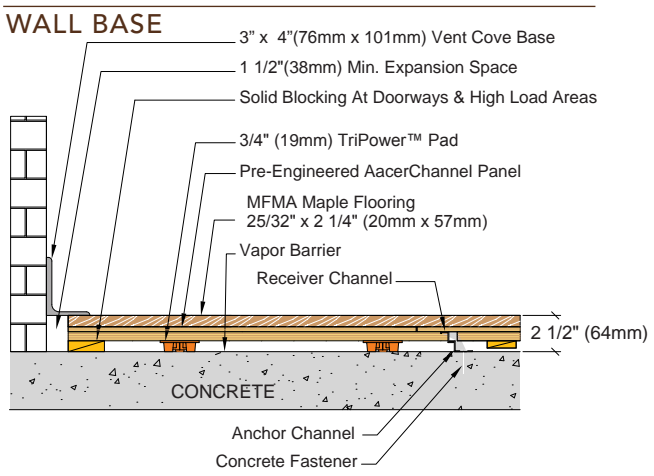


## AacerChannel®

AacerChannel® enhances performance in gymnasiums, dance floors and multipurpose facilities.



Anchorage	Steel Channel
Certified	
Green Status LEED Contributors	 FSC® Certified Maple - MRc7 FSC® Certified SubFloor Components - MRc7 EQ - 4.2 Regional Materials - MRc5.1 & 5.2
Optional Versions	AacerChannel L.P.
Resilience	TriPower™ Pads <i>*other options available</i>
Slab Depression	<b>3/4" (19 mm) TriPower™ Pads</b> 25/32" (20mm) flooring – 2 1/2" (64mm) 33/32" (26mm) flooring – 2 3/4" (70mm)  <b>1/2"(12mm) TriPower™ Pads</b> 25/32" (20mm) flooring – 2 1/4" (57mm) 33/32" (26 mm) flooring – 2 1/2" (64mm)
Subfloor Construction	Pre-manufactured panels
System Type	Fixed Resilient
Testing Laboratory	
U.S. Patent#	# 5,647,183
Warranty	Lifetime available



**AacerFlooring.com (877) 582-1181**

It is the policy of Aacer Flooring to continuously improve its line of products. Therefore, Aacer Flooring reserves the right to change, modify or discontinue systems, specifications and accessories of all products at any time without notice or obligation to purchaser.