



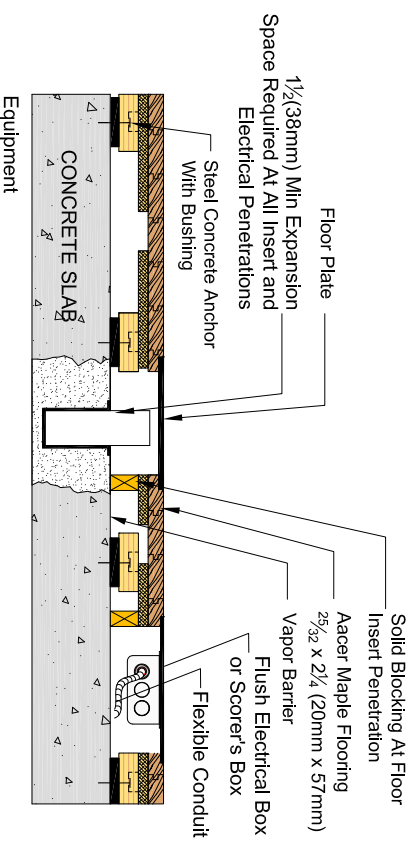
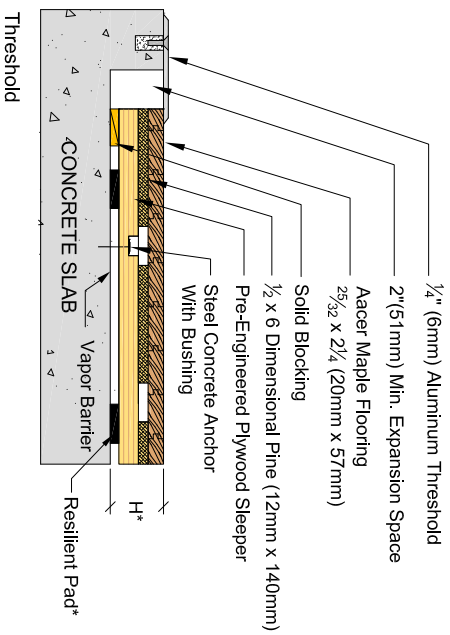
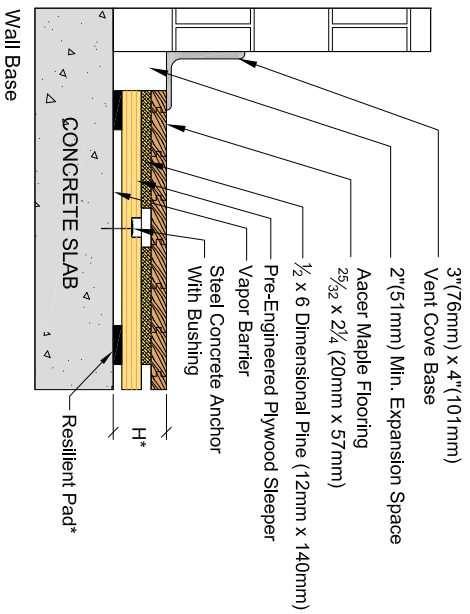


Anchored PowerLoc

Pad	Pad Description	Profile Height
	3/4" (19mm) Tri-Power Pad, Available in 3 ASTM Harnesses - 50, 60, 70	3 7/8" (79mm)
	3/4" (19mm) Acer Flex	3 3/8" (79mm)
	1/2" (12mm) Tri-Power Pad, ASTM Harness 55	2 7/8" (67mm)
	7/8" (11mm) EcoDin	2 5/8" (67mm)

* Refer to key for pad options and system heights



REVISIONS

Description	Date	Who

Acer Flooring LLC
970 Ogden Rd
Peshigo, WI 54157

Phone: 715-582-1181
Fax: 715-582-1182

DESCRIPTION:
Anchored PowerLoc w/ 1/2" x 6 Pine

PART NUMBER:
DATE: 3-24-2015

SCALE: n/a

DRAWN BY: S Daniel
CHECKED BY:

FILE: AnchoredPwLoc_L6
SHEET: 1

