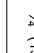

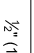

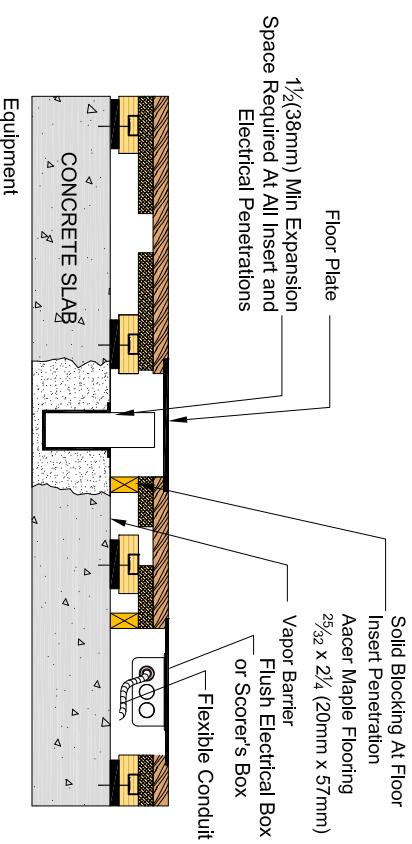
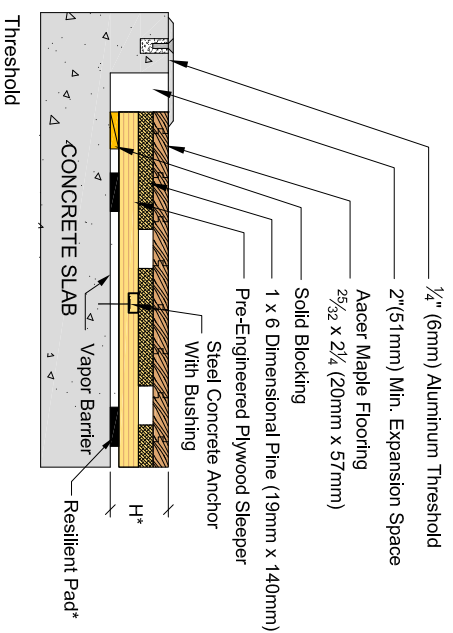
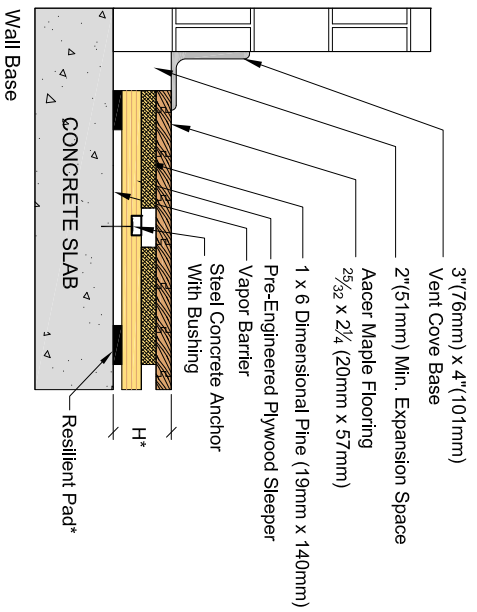


Anchored PowerLoc

Pad	Pad Description	Profile Height
	3/4" (19mm) Tri-Power Pad, Available in 3 ASTM Harnesses - 50, 60, 70	3 3/8" (86mm)
	3/4" (19mm) Acer Flex	3 3/8" (86mm)
	1/2" (12mm) Tri-Power Pad, ASTM Harness 55	2 7/8" (73mm)
	7/8" (11mm) EcoDin	2 7/8" (73mm)

* Refer to key for pad options and system heights



REVISIONS

Description	Date	Who

Acer Flooring LLC
970 Ogden Rd
Peshigo, WI 54157

Phone: 715-582-1181
Fax: 715-582-1182

Anchored PowerLoc w/ 1 x 6 Pine



DESCRIPTION: Anchored PowerLoc w/ 1 x 6 Pine
PART NUMBER: n/a
SCALE: n/a

DATE: 3-24-2015
DRAWN BY: S Daniel
CHECKED BY:

FILE: AnchoredPowerLoc1_gpine
SHEET: 1