

AacerChannel™ LP

FIXED RESILIENT SYSTEMS

A high performance sports floor system with the resiliency and safety of a floating floor and the stability of an anchored system. This unique combination is selected for large field houses and combination wood and synthetic facilities.



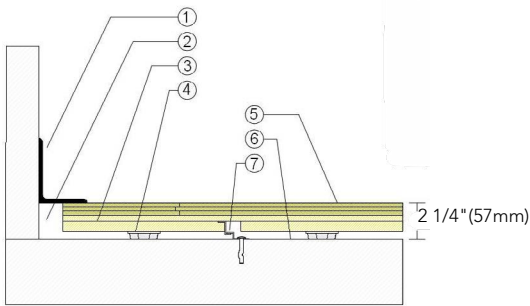
AcerChannel™ LP

AcerChannel™ LP enhances performance in gymnasiums, dance floors and multipurpose facilities.



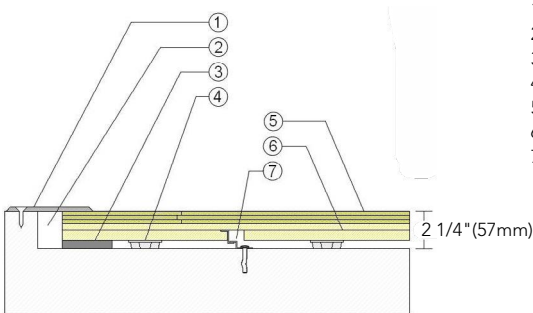
- | | |
|---|--|
| 1. Precision-milled Acer Maple | 4. 16-gauge Steel Anchored to Concrete |
| 2. Integrated Panels form a Monolithic Subfloor | 5. Vapor Retarder |
| 3. 1/2" (12mm) TriPower™ Pad | 6. Concrete |

WALL BASE



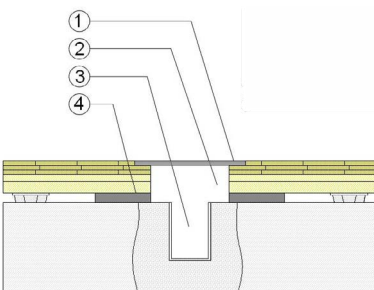
- 3" x 4" (76mm x 101mm) Vent Cove Base
- 1 1/2" (38mm) Min. Expansion Space
- AcerChannel LP Plywood Subfloor Panel
- 1/2" (12mm) TriPower™ Resilient Pad
- 25/32" (20mm) MFMA Maple Flooring
- Vapor Retarder
- Anchored Steel Channel

THRESHOLD



- 1/4" (6mm) Aluminum Threshold
- 1 1/2" (38mm) Min. Expansion Space
- Solid Blocking at Doorway
- 1/2" (12mm) TriPower™ Resilient Pad
- 25/32" (20mm) MFMA Maple Flooring
- AcerChannel LP Subfloor Panel
- Anchored Steel Channel

EQUIPMENT



- Floor Plate
- 1 1/2" (38mm) Min. Expansion Space Required at all Insert & Electrical Penetrations
- Concrete Floor Penetration
- Solid Blocking at Insert

Anchorage

Certified

Green Status and LEED Contributors

Resilience

Slab Depression

Optional AcerChannel Systems

Subfloor Construction

System Type

Testing Laboratory Partners

U.S. Patent #

Drill and Pin



- FSC® Certified Maple - MR
- FSC® Certified Subfloor Components - MR
- Environmental Quality - EQ
- Regional Materials - MR

1/2" (12mm) TriPower™ Resilient Pads
*Other pad options available.

- 25/32" (20mm) flooring – 2 1/4" (57mm)
- 33/32" (26mm) flooring – 2 1/2" (64mm)

AcerChannel
AcerChannel VLP HC
AcerChannel VLP

Pre-manufactured panels

Fixed Resilient



#5,647,183

It is the policy of Acer Flooring to continuously improve its line of products. Therefore, Acer Flooring reserves the right to change, modify or discontinue systems, specifications and accessories of all products at any time without notice or obligation to purchaser.



see us at Sweets.com

