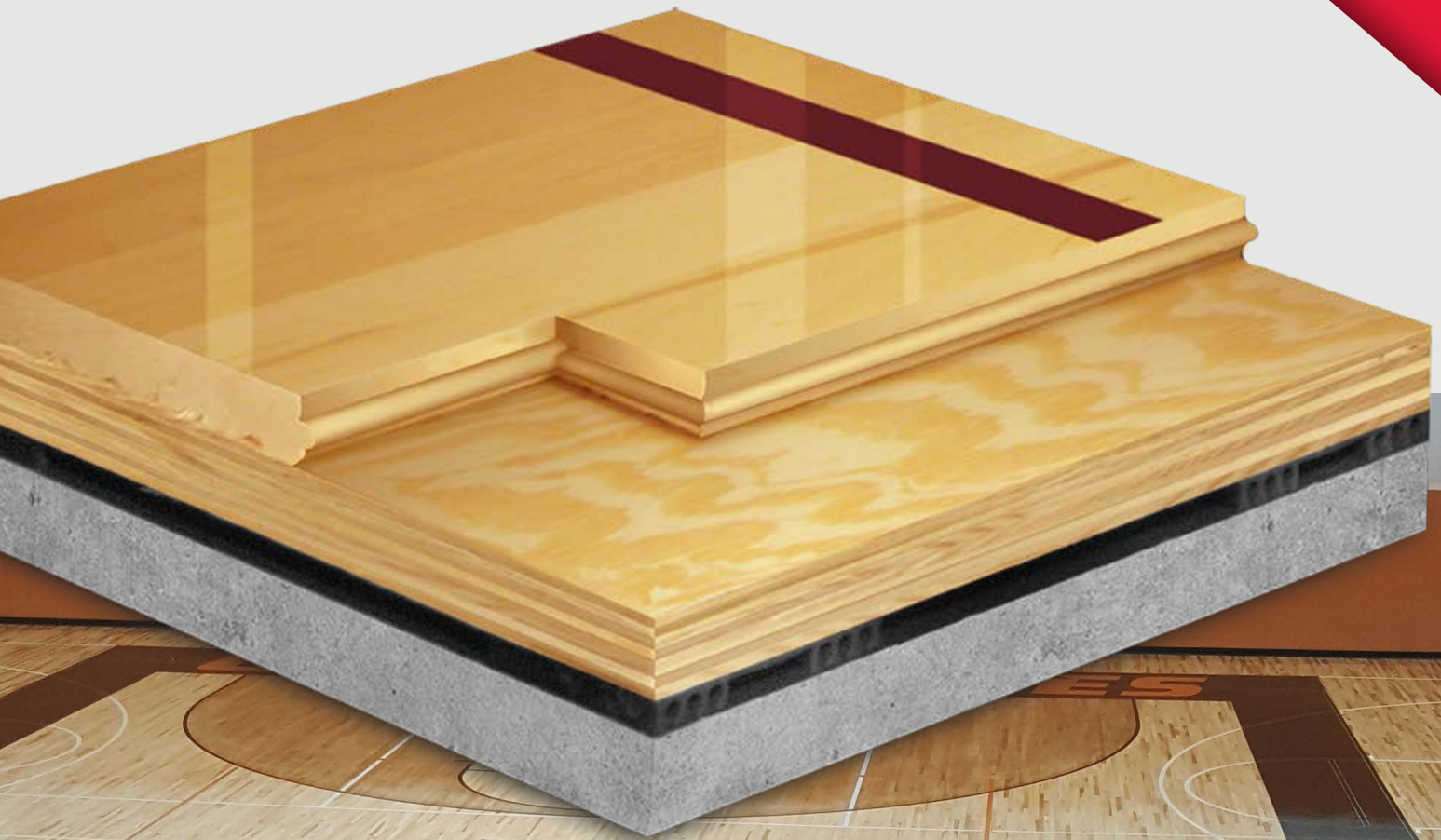


# AacerCush II

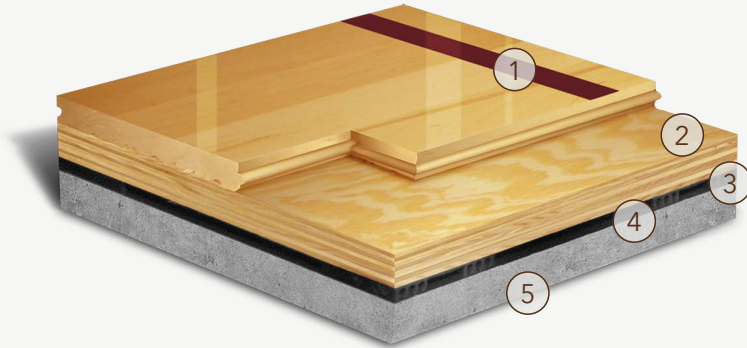
## FLOATING SYSTEMS

The AacerCush II floor system combines Aacer maple flooring with 2 layers of APA underlayment and resilient pads. The result is an economic, versatile athletic floor with increased shock absorbency and energy return that helps reduce injuries. This widely used floating sport floor system is chosen for field houses, gymnasiums, multipurpose rooms and dance floors.



# AcerCush II

Increased structural integrity, shock absorbency and energy return make AcerCush II an athletic flooring system selected for field houses, combination synthetic and wood facilities, gymnasiums, dance floors, stages and multipurpose rooms.



- 1. Precision-milled Acer Maple
- 2. Two layers of 15/32" (12mm) Exposure 1, APA Rated Sheathing
- 3. 3/8" (10mm) AcerCush Resilient Pad
- 4. Vapor Retarder
- 5. Concrete

Green Status and LEED Contributors



- FSC® Certified Maple - MR
- FSC® Certified Subfloor Components - MR
- Environmental Quality - EQ
- Regional Materials - MR

Resilience

3/8" (10mm) AcerCush Pads  
\*Other pad options available

Slab Depression

- 25/32" (20mm) flooring - 2 1/8" (54mm)
- 33/32" (26mm) flooring - 2 3/8" (60mm)

Optional AcerCush Systems

AcerCush I  
AcerCush I+  
Anchored AcerCush I  
Anchored AcerCush I+

Subfloor Construction

Plywood

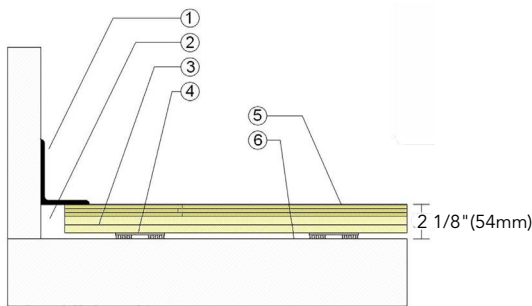
System Type

Floating

Testing Laboratory Partners

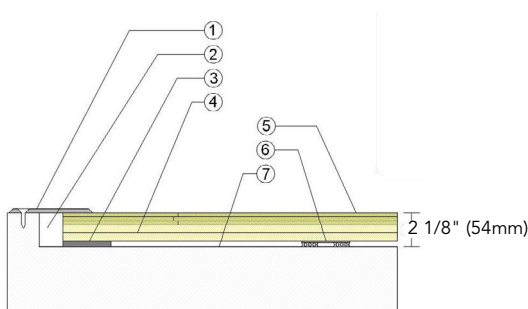


## WALL BASE



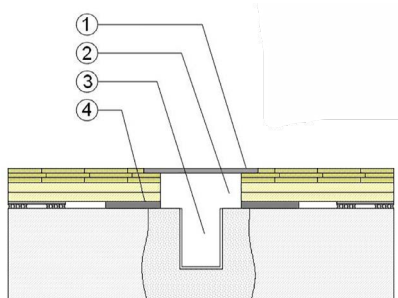
1. 3" x 4" (76mm x 101mm) Vent Cove Base
2. 1-1/2" (38mm) Min. Expansion Space
3. AcerCush Plywood Subfloor Panels
4. 3/8" (10mm) AcerCush Pad
5. 25/32" (20mm) MFMA Maple Flooring
6. Vapor Retarder

## THRESHOLD



1. 1/4" (6mm) Aluminum Threshold
2. 1-1/2" (38mm) Min. Expansion Space
3. Solid Blocking at Doorway
4. AcerCush Plywood Subfloor Panels
5. 25/32" (20mm) MFMA Maple Flooring
6. 3/8" (10mm) AcerCush Pad
7. Vapor Retarder

## EQUIPMENT



1. Floor Plate
2. 1-1/2" (38mm) Expansion Space at all Insert & Electrical Penetrations
3. Concrete Floor Penetration
4. Solid Blocking at Insert

It is the policy of Acer Flooring to continuously improve its line of products. Therefore, Acer Flooring reserves the right to change, modify or discontinue systems, specifications and accessories of all products at any time without notice or obligation to purchaser.



see us at [Sweets.com](http://Sweets.com)

