

# AacerFlex™

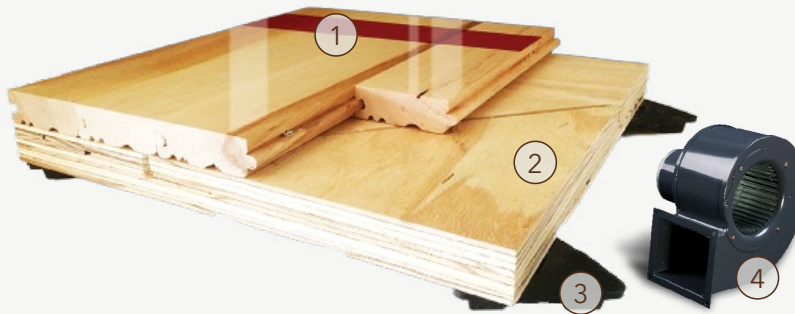
FLOATING SYSTEM



AacerFlex™ is a performance sports floor system which meets the ergonomic needs of today's athlete through sufficient force reduction, increased energy return, as well as outstanding ball rebound characteristics. The unique pad minimizes potential deadspots by increasing pad surface contact area without compromising the load bearing ability of the system.

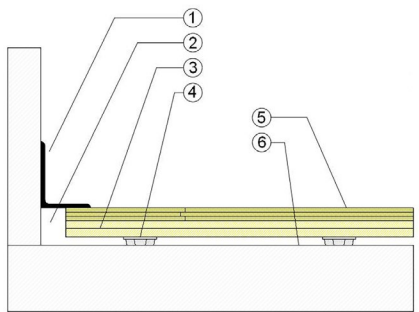


AacerFlex™ incorporates precision engineered pads that integrates load bearing ability with enhanced athletic performance. AacerFlex can be specified for multipurpose rooms, competitive sports applications and dance/aerobics. Available in AacerFlex™ and AacerFlex™ TP.



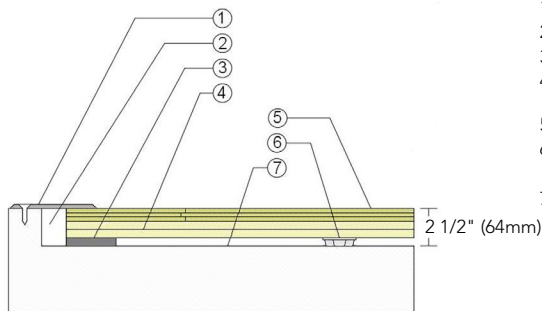
- 1. Infinity MFMA Maple
- 2. Two layers of 15/32" (12mm) NOM. Exposure 1, APA Rated Sheathing
- 3. 3/4" (19mm) TriPower™ Pad
- 4. PowerVent Airflow Option

## WALL BASE



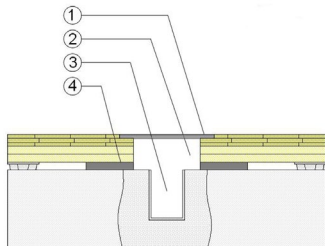
- 1. 3" x 4" (76mm x 101mm) Vent Cove Base
- 2. 1 1/2" (38mm) Min. Expansion Space
- 3. 3/4" (19mm) TriPower™ Pad
- 4. Two layers 15/32" (12mm) NOM. Exposure 1, APA Rated Sheathing
- 5. MFMA Maple Flooring 25/32" x 2 1/4" (20mm x 57mm)
- 6. Vapor Retarder

## THRESHOLD



- 1. 1/4" (6mm) Aluminum Threshold
- 2. 1 1/2" (38mm) Min. Expansion Space
- 3. Solid Blocking
- 4. Two layers 15/32" (12mm) NOM. Exposure 1, APA Rated Sheathing
- 5. 3/4" (19mm) TriPower™ Pad
- 6. MFMA Maple Flooring 25/32" x 2 1/4" (20mm x 57mm)
- 7. Vapor Retarder

## EQUIPMENT



- 1. Floor Plate
- 2. 1 1/2" (38mm) Min. Expansion Space Required at all Insert & Electrical Penetrations
- 3. Concrete Floor Penetration
- 4. Solid Blocking at Floor Insert

## Certified



## Green Status and LEED Contributors



- FSC® Certified Maple - MR
- FSC® Certified Subfloor Components - MR
- Environmental Quality - EQ
- Regional Materials - MR

## Optional Versions

AacerFlex, ECO, TriPower Pads:

- Black, 1/2" (12mm), 50D
- Red, 3/4" (19mm), 70D
- Black, 3/4" (19mm), 60D
- Blue, 3/4" (19mm), 50D

\*Other pad options available. Contact your Regional Sales Manager.

## Resilience

Aacer TriPower™ Pad

## Slab Depression

3/4" (19mm) TriPower™, AacerFlex Pads

- 25/32" (20mm) flooring – 2 1/2" (64mm)

1/2" (12mm) TriPower™ Pad

- 25/32" (20mm) flooring – 2 1/4" (57mm)

1/2" (12mm) ECO Pad

- 25/32" (20mm) flooring – 2 1/8" (55mm)

## Subfloor Construction

Plywood

## System Type

Floating

## Optional Protection System

PowerVent™ Airflow System

## Testing Laboratory



It is the policy of Infinity Flooring to continuously improve its line of products. Therefore, Infinity Flooring reserves the right to change, modify or discontinue systems, specifications and accessories of all products at any time without notice or obligation to purchaser.