

# PowerPlay™ TP

FIXED RESILIENT SYSTEMS

A performance sports floor system with shock absorption and resilience at the highest value. This unique combination of high performance, economics and short installation time enhances athletic effectiveness in competition gymnasiums, multipurpose rooms and dance floors. Specify PowerPlay™ TP in an EN certified version where maximum performance is essential.



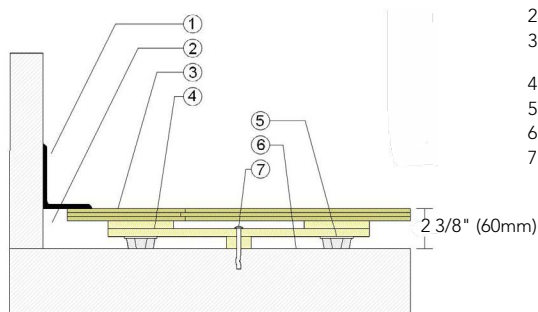
# PowerPlay™ TP

An anchored performance sports floor system consisting of vapor barrier, pre-engineered cushioned panels and Acer MFMA maple flooring.



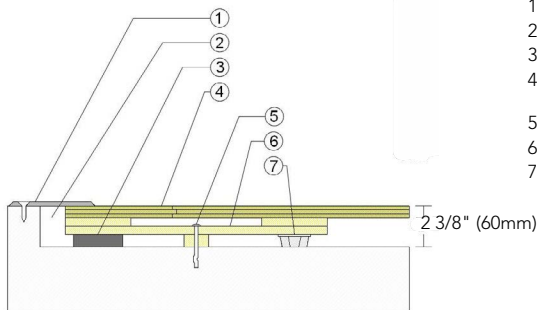
- 1. Precision-milled Acer Maple
- 2. PowerPlay™ Plywood Panels
- 3. TriPower™ Pad
- 4. Heavy-Duty Concrete Fastener

## WALL BASE



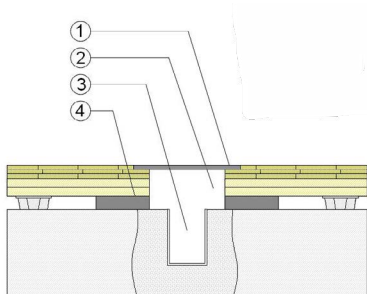
- 1. 3" x 4" (76mm x 101mm) Vent Cove Base
- 2. 1 1/2" (38mm) Min. Expansion Space
- 3. 25/32" (20mm) MFMA Maple Flooring
- 4. PowerPlay™ Subfloor Panel
- 5. 3/4" (19mm) TriPower™ Resilient Pad
- 6. Vapor Retarder
- 7. Concrete Anchor Pin

## THRESHOLD



- 1. 1/4" (6mm) Aluminum Threshold
- 2. 1 1/2" (38mm) Min. Expansion Space
- 3. Solid Blocking at Doorway
- 4. 25/32" (20mm) MFMA Maple Flooring
- 5. Concrete Anchor Pin
- 6. PowerPlay™ Subfloor Panel
- 7. 3/4" (19mm) TriPower™ Resilient Pad

## EQUIPMENT



- 1. Floor Plate
- 2. 1 1/2" (38mm) Min. Expansion Space at all Inserts & Electrical Penetrations
- 3. Concrete Floor Penetration
- 4. Solid Blocking at Insert

Anchorage

Certified

Drill and Pin



Green Status and LEED Contributors



- FSC® Certified Maple - MR
- FSC® Certified Subfloor Components - MR
- Environmental Quality - EQ
- Regional Materials - MR

Resilience

3/4" (19mm) TriPower™ Pad  
\*Other pad options available.

Slab Depression

- 25/32" (20mm) flooring - 2 3/8" (60mm)
- 33/32" (26mm) flooring - 2 5/8" (67mm)

Optional PowerPlay™ Systems

PowerPlay™ Cradle  
PowerPlay™ Panel  
PowerPlay™ Edge  
PowerPlay™ Trax

Subfloor Construction

Pre-manufactured panels

System Type

Fixed Resilient

Testing Laboratory Partners



It is the policy of Acer Flooring to continuously improve its line of products. Therefore, Acer Flooring reserves the right to change, modify or discontinue systems, specifications and accessories of all products at any time without notice or obligation to purchaser.



see us at [Sweets.com](http://Sweets.com)

