

UltraChannel

FIXED RESILIENT SYSTEMS

UltraChannel is a fixed resilient floor system including solid wood components designed to produce high performance while maintaining stability. The fixed resilient design enables UltraChannel to produce high levels of force reduction while uniquely controlling the area of deformation.



UltraChannel

Designed for the highest level of performance, UltraChannel's unique fixed resilient design provides a combination of comfort and play in a stable floor system.



- | | |
|--|------------------------------|
| 1. Precision-milled Aacer Maple | 4. 7/16" (11mm) ECO Pad |
| 2. (2) Layers of Solid Pine Underlayment | 5. Vapor Retarder |
| 3. 16 gauge Steel UltraChannel | 6. PowerVent™ Airflow System |

- | | |
|------------------------------------|---|
| Anchorage | Steel Channel |
| Certified | |
| Green Status and LEED Contributors | <ul style="list-style-type: none"> • FSC® Certified Maple - MR • FSC® Certified Subfloor Components - MR • Environmental Quality - EQ • Regional Materials - MR |
| Resilience | 7/16" (11mm) ECO Pads
*Other pad options available. |
| Slab Depression | <ul style="list-style-type: none"> • 25/32" (20mm) flooring – 2 1/4" (57mm) • 33/32" (26mm) flooring – 2 1/2" (64mm) |

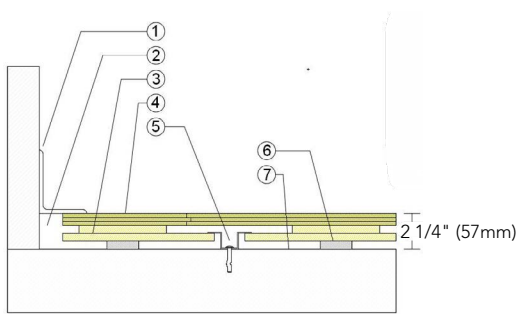
Optional Protection System
PowerVent™ Airflow System

Subfloor Construction
Kiln-Dried Dimensioned Pine

System Type
Fixed Resilient

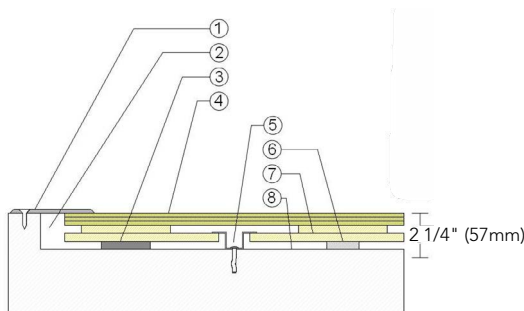
Testing Laboratory Partners

WALL BASE



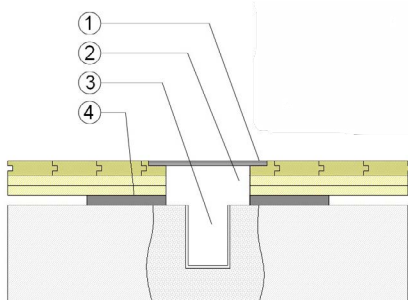
- 3" x 4" (76mm x 101mm) Vent Cove Base
- 1-1/2" (38mm) Min. Expansion Space
- UltraChannel Subfloor Panel
- 25/32" (20mm) MFMA Maple Flooring
- Anchored Steel Channel
- 7/16" (11mm) ECO Resilient Pad
- Vapor Retarder

THRESHOLD



- 1/4" (6mm) Aluminum Threshold
- 1-1/2" (38mm) Min. Expansion Space
- Solid Blocking at Doorway
- 25/32" (20mm) MFMA Maple Flooring
- Anchored Steel Channel
- Vapor Retarder
- UltraChannel Subfloor Panel
- 7/16" (11mm) ECO Pad

EQUIPMENT



- Floor Plate
- 1-1/2" (38mm) min. Expansion Space at all Inserts & Electrical Penetrations
- Concrete Floor Penetration
- Solid Blocking at Insert

It is the policy of Aacer Flooring to continuously improve its line of products. Therefore, Aacer Flooring reserves the right to change, modify or discontinue systems, specifications and accessories of all products at any time without notice or obligation to purchaser.



see us at
Sweets.com

