



**INFINITY**  
Wood Floors



**AACER**  
SPORTS FLOORING

Description: AACERCHANNEL VLP

Resilience: 1/2" (6mm) Foam

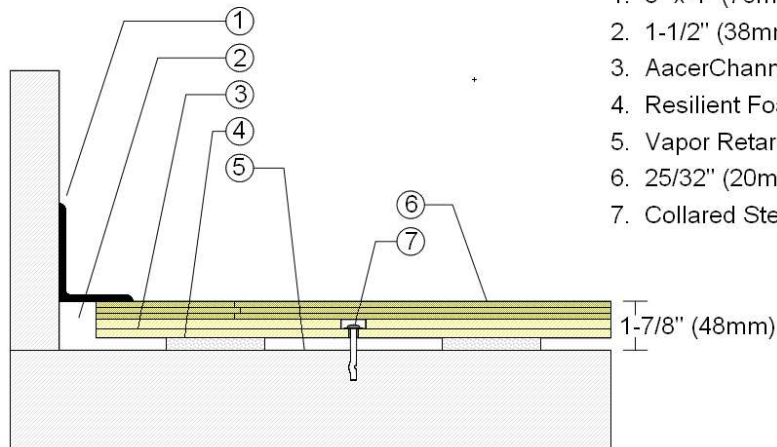
Drawn By: RR

Date: 9/9/20

Revisions

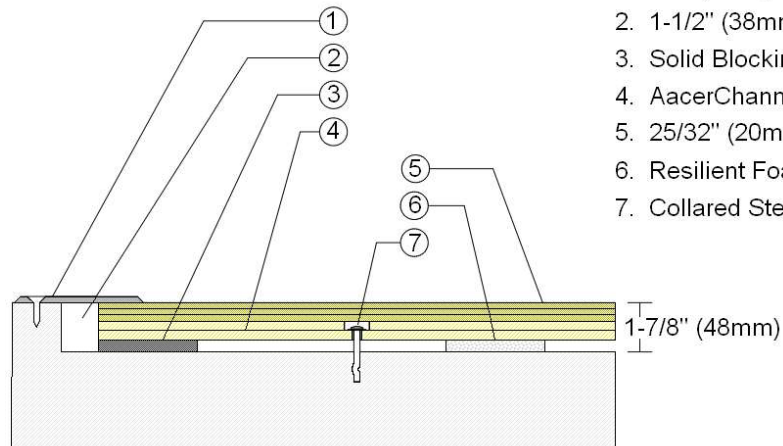
ID	Description	By	Date

### WALLBASE



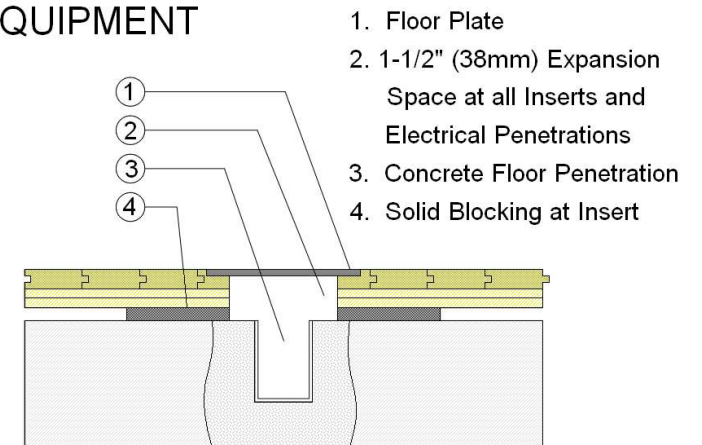
1. 3" x 4" (76mm x 101mm) Vent Cove Base
2. 1-1/2" (38mm) min. Expansion Space
3. AcerChannel VLP Subfloor Panel
4. Resilient Foam Section
5. Vapor Retarder
6. 25/32" (20mm) MFMA Maple Flooring
7. Collared Steel Concrete Anchor

### THRESHOLD



1. 1/4" (6mm) Aluminum Threshold
2. 1-1/2" (38mm) min. Expansion Space
3. Solid Blocking at Doorway
4. AcerChannel VLP Subfloor Panel
5. 25/32" (20mm) MFMA Maple Flooring
6. Resilient Foam Section
7. Collared Steel Concrete Anchor

### EQUIPMENT



1. Floor Plate
2. 1-1/2" (38mm) Expansion Space at all Inserts and Electrical Penetrations
3. Concrete Floor Penetration
4. Solid Blocking at Insert