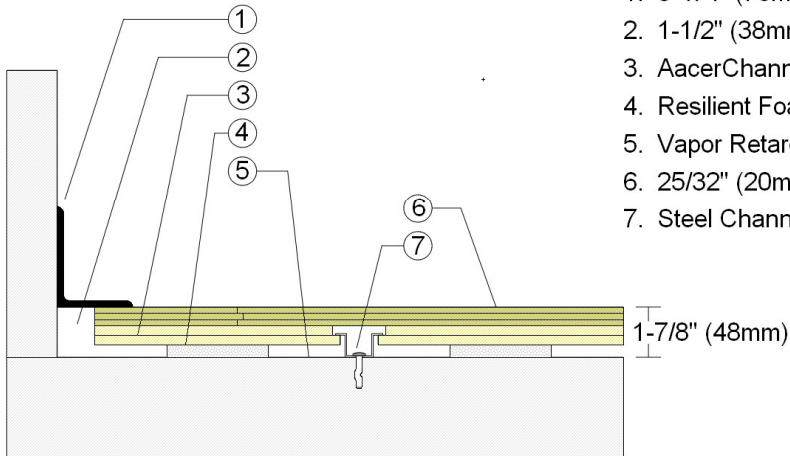




INFINITY
Wood Floors

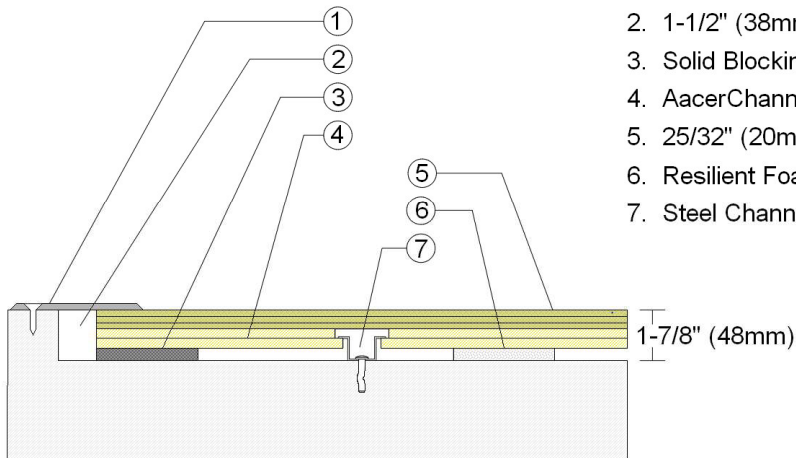
AACER
SPORTS FLOORING

WALLBASE



1. 3" x 4" (76mm x 101mm) Vent Cove Base
2. 1-1/2" (38mm) min. Expansion Space
3. AcerChannel VLP HC Subfloor
4. Resilient Foam Section
5. Vapor Retarder
6. 25/32" (20mm) MFMA Maple Flooring
7. Steel Channel and Concrete Anchor

THRESHOLD



1. 1/4" (6mm) Aluminum Threshold
2. 1-1/2" (38mm) min. Expansion Space
3. Solid Blocking at Doorway
4. AcerChannel VLP HC Subfloor
5. 25/32" (20mm) MFMA Maple Flooring
6. Resilient Foam Section
7. Steel Channel and Concrete Anchor

Description: AACERCHANNEL VLP HC

Resilience: 1/2" (6mm) Foam

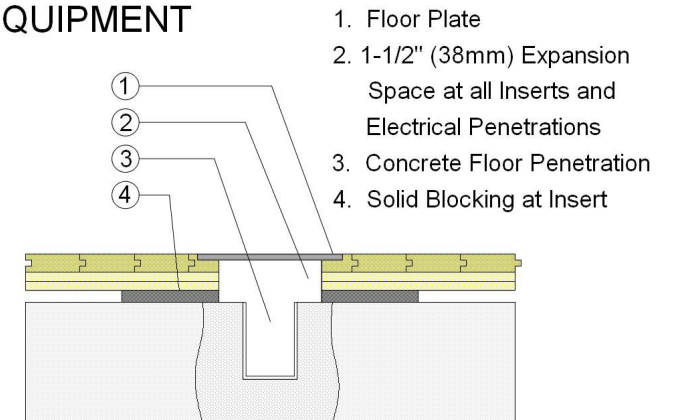
Drawn By: RR

Date: 1/18/19

Revisions

| ID | Description | By | Date |
|----|-------------|----|------|
| | | | |
| | | | |

EQUIPMENT



1. Floor Plate
2. 1-1/2" (38mm) Expansion Space at all Inserts and Electrical Penetrations
3. Concrete Floor Penetration
4. Solid Blocking at Insert