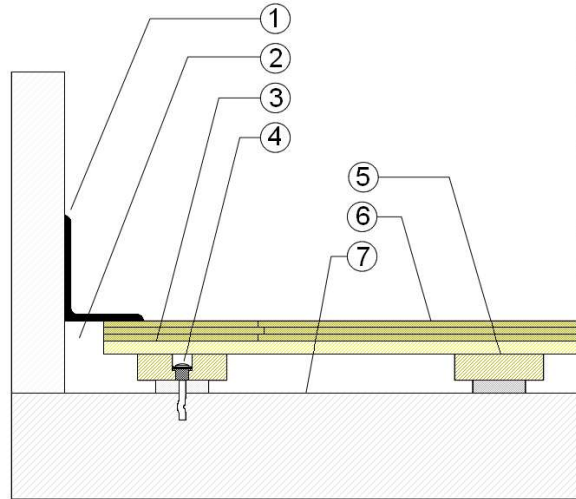


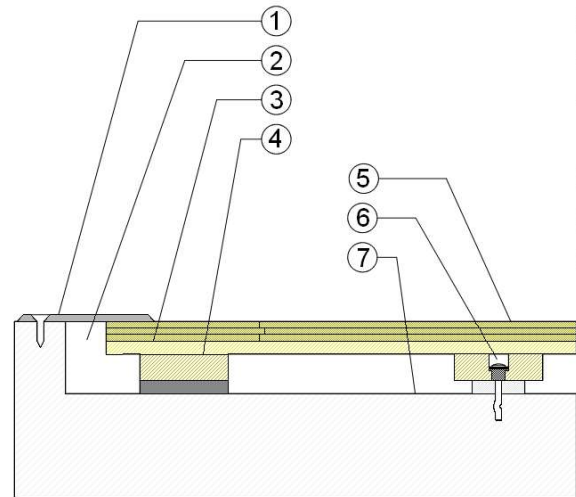
### WALLBASE



1. 3" x 4" (76mm x 101mm) Vent Cove Base
2. 1-1/2" (38mm) min. Expansion Space
3. 15/32" (12mm) Plywood Subfloor
4. Steel Concrete Anchor and Bushing
5. Engineered Plywood Sleeper with 7/16" (11mm) ECO Resilient Pads
6. 25/32" (20mm) MFMA Maple Flooring
7. Vapor Retarder

2-5/8" (67mm)

### THRESHOLD



1. 1/4" (6mm) Aluminum Threshold
2. 1-1/2" (38mm) min. Expansion Space
3. 15/32" (12mm) Plywood Subfloor
4. Engineered Plywood Sleeper with Solid Blocking Attached
5. 25/32" (20mm) MFMA Maple Flooring
6. Steel Concrete Anchor and Bushing
7. Vapor Retarder

2-5/8" (67mm)

Description: ANCHORED POWERSLEEPER

Resilience: 7/16" (11mm) ECO pads

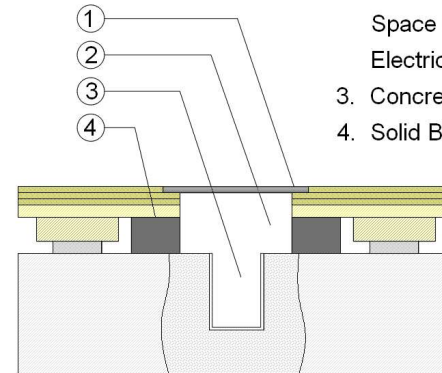
Drawn By: RR

Date: 4/22/20

#### Revisions

ID	Description	By	Date

### EQUIPMENT



1. Floor Plate
2. 1-1/2" (38mm) min. Expansion Space at All Inserts and Electrical Penetrations
3. Concrete Floor Penetration
4. Solid Blocking at Insert