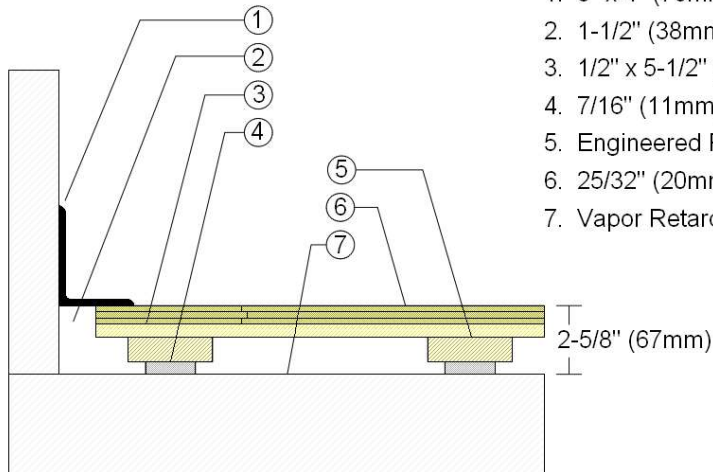
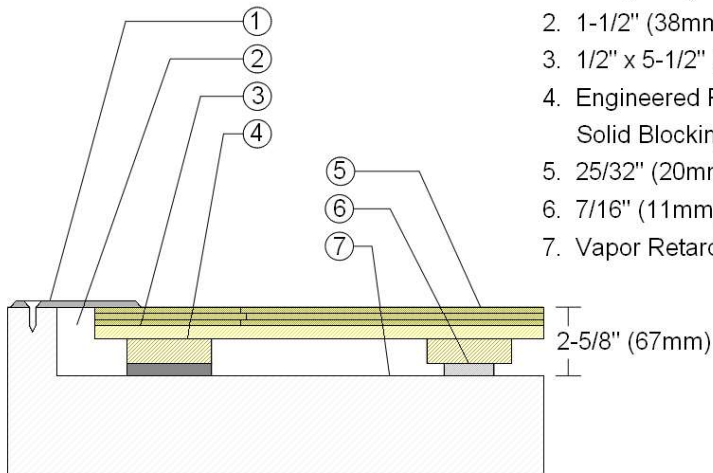


### WALLBASE



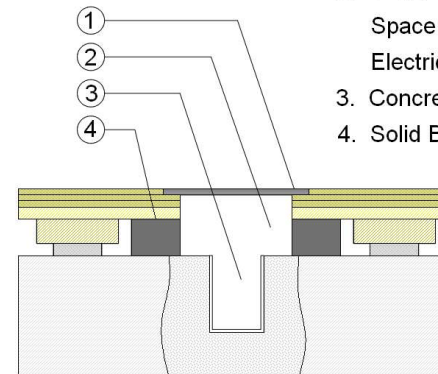
1. 3" x 4" (76mm x 101mm) Vent Cove Base
2. 1-1/2" (38mm) min. Expansion Space
3. 1/2" x 5-1/2" (12mm x 140mm) Pine Subfloor
4. 7/16" (11mm) ECO Resilient Pad
5. Engineered Plywood Sleeper
6. 25/32" (20mm) MFMA Maple Flooring
7. Vapor Retarder

### THRESHOLD



1. 1/4" (6mm) Aluminum Threshold
2. 1-1/2" (38mm) min. Expansion Space
3. 1/2" x 5-1/2" (12mm x 140mm) Pine Subfloor
4. Engineered Plywood Sleeper with Solid Blocking Attached
5. 25/32" (20mm) MFMA Maple Flooring
6. 7/16" (11mm) ECO Resilient Pad
7. Vapor Retarder

### EQUIPMENT



1. Floor Plate
2. 1-1/2" (38mm) min. Expansion Space at All Inserts and Electrical Penetrations
3. Concrete Floor Penetration
4. Solid Blocking at Insert

Description: POWERLOC

Resilience: 7/16" (11mm) ECO pads

Drawn By: RR

Date: 10/18/20

#### Revisions

ID	Description	By	Date