

Description: SCISSORLOC II

Resilience: 1/4" (6mm) Foam Blanket

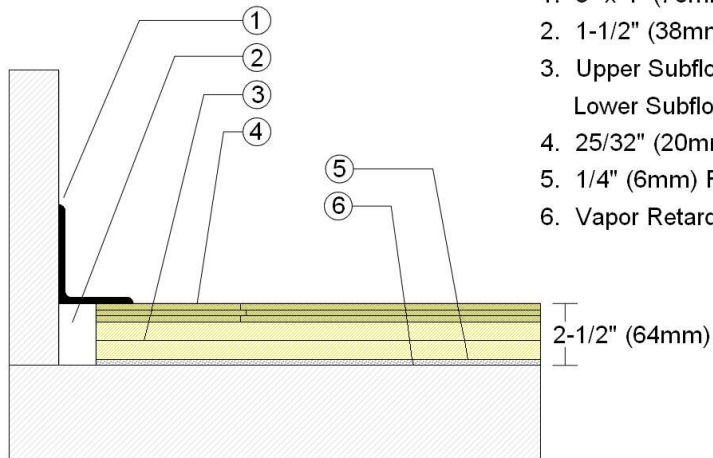
Drawn By: RR

Date: 7/23/20

Revisions

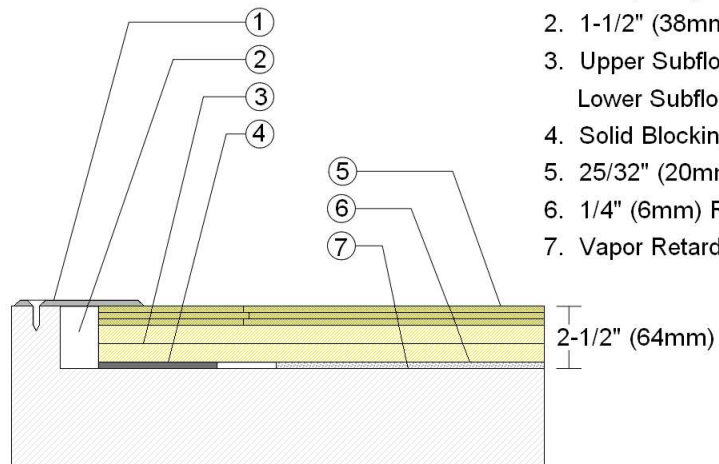
ID	Description	By	Date

### WALLBASE



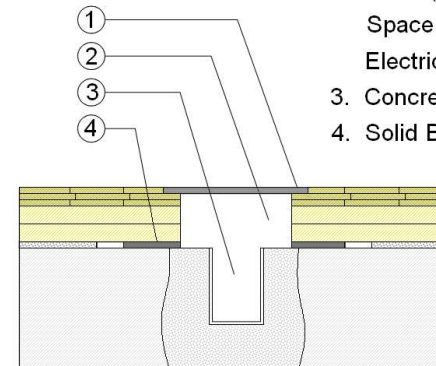
1. 3" x 4" (76mm x 101mm) Vent Cove Base
2. 1-1/2" (38mm) min. Expansion Space
3. Upper Subfloor Spaced 2" (51mm) Apart  
Lower Subfloor Spaced 6" (152mm) Apart
4. 25/32" (20mm) MFMA Maple Flooring
5. 1/4" (6mm) Resilient Foam Blanket
6. Vapor Retarder

### THRESHOLD



1. 1/4" (6mm) Aluminum Threshold
2. 1-1/2" (38mm) min. Expansion Space
3. Upper Subfloor Spaced 2" (51mm) Apart  
Lower Subfloor Spaced 6" (152mm) Apart
4. Solid Blocking at Doorway
5. 25/32" (20mm) MFMA Maple Flooring
6. 1/4" (6mm) Resilient Foam Blanket
7. Vapor Retarder

### EQUIPMENT



1. Floor Plate
2. 1-1/2" (38mm) Expansion Space at all Inserts and Electrical Penetrations
3. Concrete Floor Penetration
4. Solid Blocking at Insert