

Description: ULTRACHANNEL

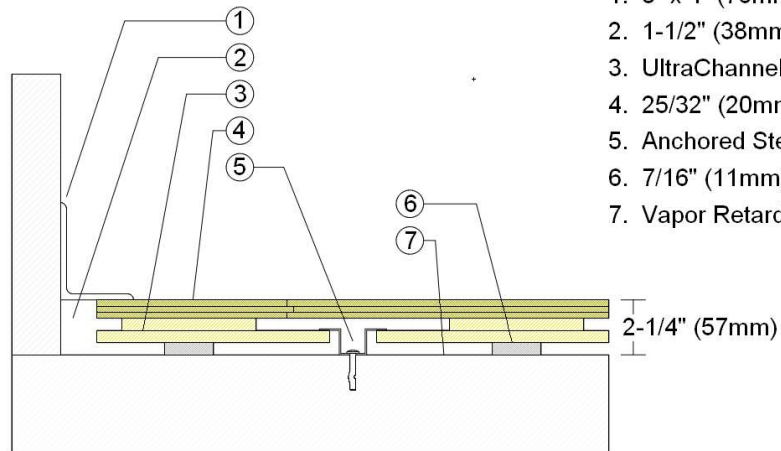
Resilience: 7/16" (11mm) ECO pads

Drawn By: RR Date: 9/22/20

Revisions

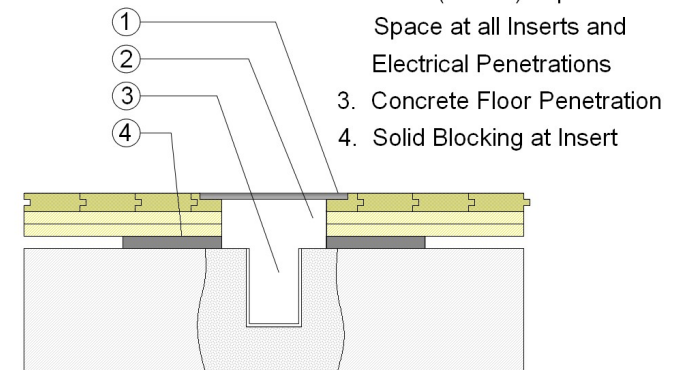
ID	Description	By	Date

WALLBASE



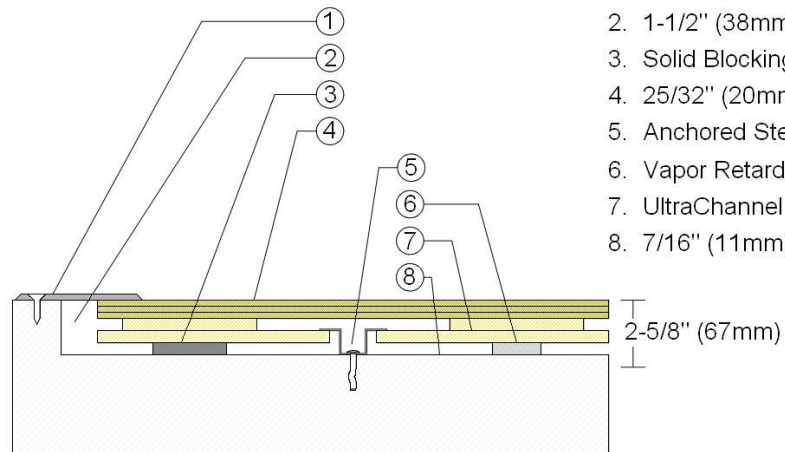
1. 3" x 4" (76mm x 101mm) Vent Cove Base
2. 1-1/2" (38mm) min. Expansion Space
3. UltraChannel Subfloor Panel
4. 25/32" (20mm) MFMA Maple Flooring
5. Anchored Steel Channel
6. 7/16" (11mm) ECO Resilient Pad
7. Vapor Retarder

EQUIPMENT



1. Floor Plate
2. 1-1/2" (38mm) Expansion Space at all Inserts and Electrical Penetrations
3. Concrete Floor Penetration
4. Solid Blocking at Insert

THRESHOLD



1. 1/4" (6mm) Aluminum Threshold
2. 1-1/2" (38mm) min. Expansion Space
3. Solid Blocking at Doorway
4. 25/32" (20mm) MFMA Maple Flooring
5. Anchored Steel Channel
6. Vapor Retarder
7. UltraChannel Subfloor Panel
8. 7/16" (11mm) ECO Resilient Pad