

Description: ULTRAFLEX

Resilience: 7/16" (11mm) ECO pads

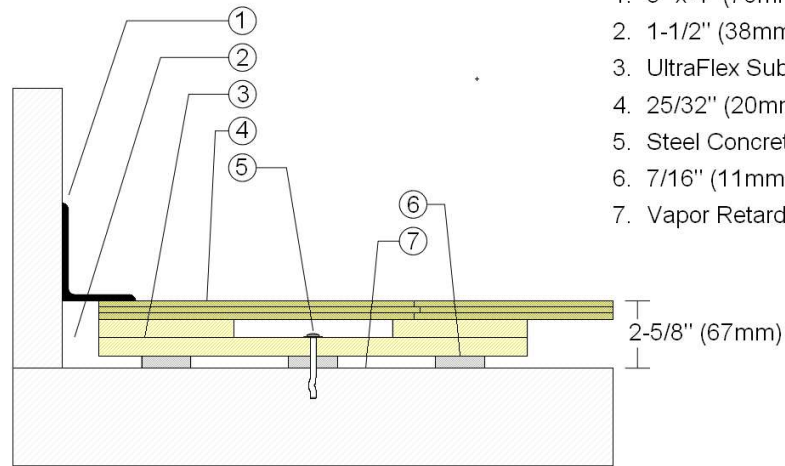
Drawn By: RR

Date: 9/10/20

Revisions

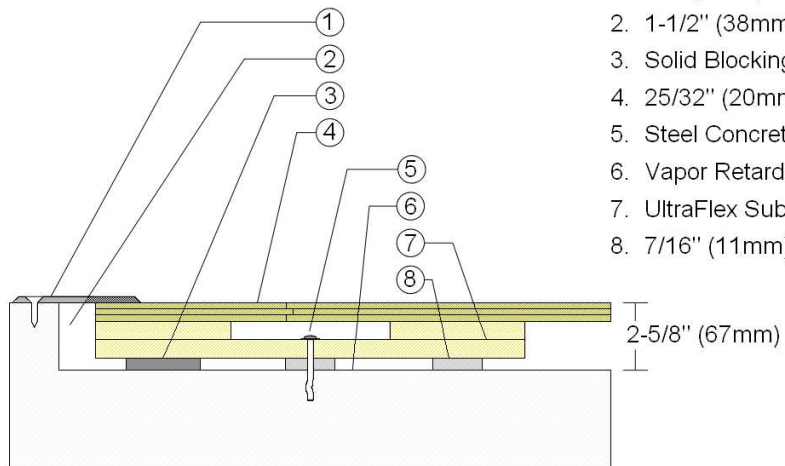
ID	Description	By	Date

WALLBASE



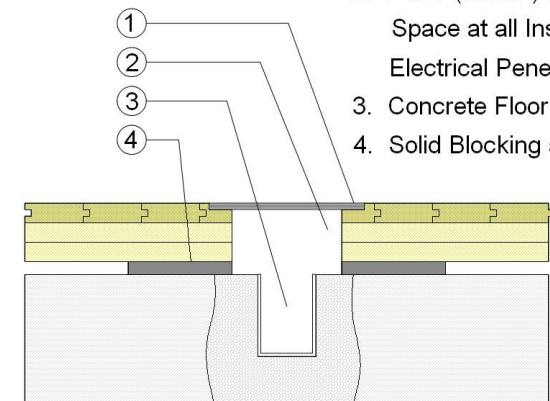
1. 3" x 4" (76mm x 101mm) Vent Cove Base
2. 1-1/2" (38mm) min. Expansion Space
3. UltraFlex Subfloor Panel
4. 25/32" (20mm) MFMA Maple Flooring
5. Steel Concrete Anchor
6. 7/16" (11mm) ECO Resilient Pad
7. Vapor Retarder

THRESHOLD



1. 1/4" (6mm) Aluminum Threshold
2. 1-1/2" (38mm) min. Expansion Space
3. Solid Blocking at Doorway
4. 25/32" (20mm) MFMA Maple Flooring
5. Steel Concrete Anchor
6. Vapor Retarder
7. UltraFlex Subfloor Panel
8. 7/16" (11mm) ECO Resilient Pad

EQUIPMENT



1. Floor Plate
2. 1-1/2" (38mm) Expansion Space at all Inserts and Electrical Penetrations
3. Concrete Floor Penetration
4. Solid Blocking at Insert