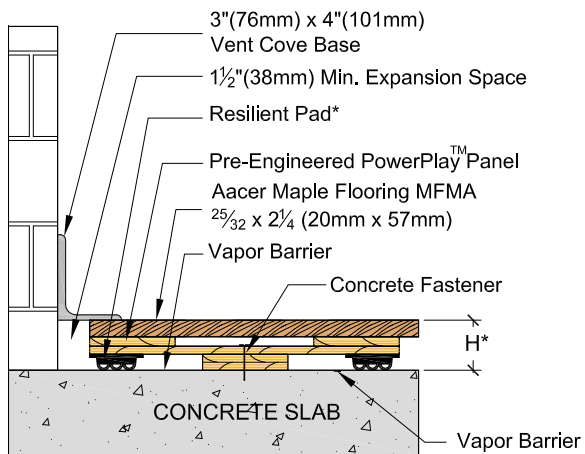
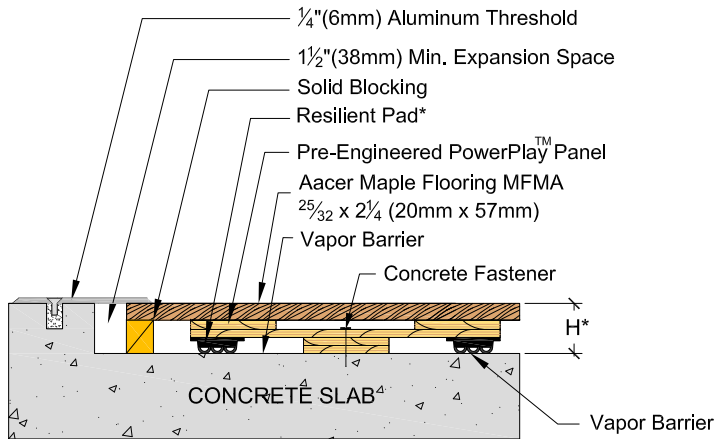


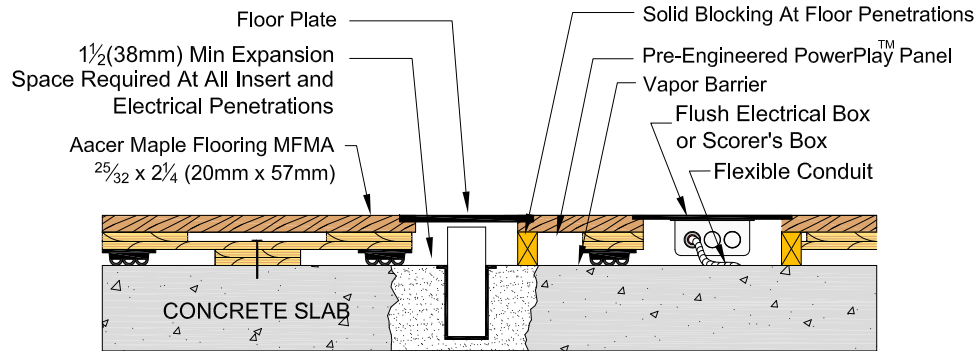
# Aacer PowerPlay II™



Wall Base



Threshold



Equipment

System	Resilient Pad Options*	Pad Description	Profile Height (H*)
DIN		3/4" (19mm) Tri-Power Pad. Available in 3 ASTM Harnesses - 50, 60, 70	2 3/8" (60mm)
II		3/4" (19mm) Aacer Flex	2 3/8" (60mm)
LP		1/2" (12mm) Tri-Power Pad. ASTM Harness 55	2 1/8" (54mm)
LP		7/16" (11mm) EcoDin	2 1/8" (53mm)
VLP		3/8" (10mm) AacerCush	1 7/8" (48mm)

\* Refer to key for pad options and system heights

REVISIONS

I.D.	DESCRIPTION	WHEN	WHO
-			

Aacer Flooring LLC  
970 Ogden Rd  
Peshtigo, WI 54157

Phone: 715-582-1181  
Fax: 715-582-1182

DESCRIPTION: <b>Aacer PowerPlay II</b>	
PART NUMBER:	DATE: <b>3-24-2015</b>
SCALE: <b>n/a</b>	DRAWN BY: <b>S Daniel</b> CHECKED BY:

FILE:  
AacerPowerPlayII

SHEET:  
**1**