

PowerPlay™ II

FIXED RESILIENT SYSTEMS

A performance sports floor system with shock absorption and resilience at the highest value. This unique combination of high performance, economics and short installation time enhances athletic effectiveness in competition gymnasiums, multipurpose rooms and dance floors.



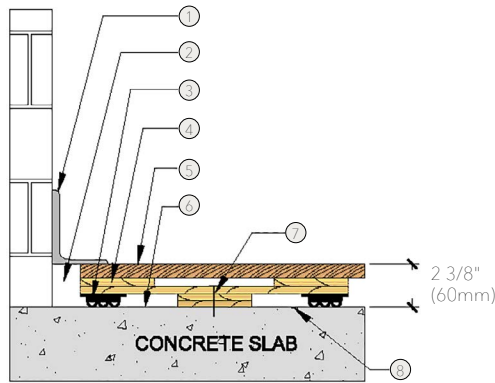
PowerPlay™ II

A balanced performance sports floor system consisting of pre-engineered cushioned panels and Acer MFMA maple flooring.



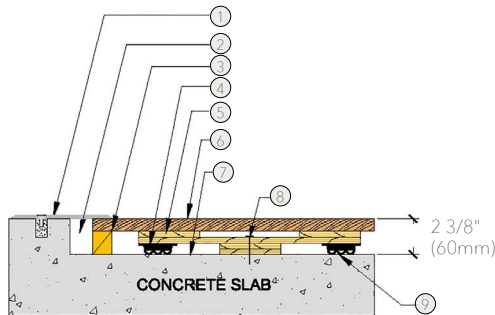
- 1. Precision-milled Acer Maple
- 2. Pre-Engineered Cantilever PowerPlay™ Panels
- 3. AcerFlex Pad
- 4. Heavy-Duty Concrete Fastener

WALL BASE



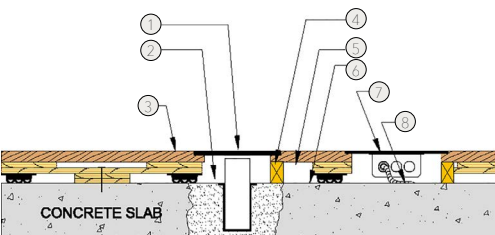
- 1. 3" x 4" (76mm x 101mm) Vent Cover Base
- 2. 1 1/2" (38mm) Min. Expansion Space
- 3. 3/4" (19mm) AcerFlex Pad
- 4. Pre-Engineered PowerPlay™ Panel
- 5. MFMA Maple Flooring 25/32" x 2 1/4" (20mm x 57mm)
- 6. Vapor Barrier
- 7. Concrete Fastener
- 8. Vapor Barrier

THRESHOLD



- 1. 1/4" (6mm) Aluminum Threshold
- 2. 1 1/2" (38mm) Min. Expansion Space
- 3. Solid Blocking
- 4. 3/4" (19mm) AcerFlex Pad
- 5. Pre-Engineered PowerPlay™ Panel
- 6. MFMA Maple Flooring 25/32" x 2 1/4" (20mm x 57mm)
- 7. Vapor Barrier
- 8. Concrete Fastener
- 9. 3/4" (19mm) AcerFlex Pad

EQUIPMENT



- 1. Floor Plate
- 2. 1 1/2" (38mm) Min. Expansion Space Required at all Insert & Electrical Penetrations
- 3. MFMA Maple Flooring 25/32" x 2 1/4" (20mm x 57mm)
- 4. Solid Blocking at Floor Insert Penetrations
- 5. Pre-Engineered PowerPlay™ Panel
- 6. Vapor Barrier
- 7. Flush Electrical Box or Scorer's Box
- 8. Flexible Conduit

Anchorage

Certified



Green Status and LEED Contributors



- FSC® Certified Maple - MRC7
- FSC® Certified Subfloor Components - MRC7
- EQ - 4.2
- Regional Materials - MRC5.1 & 5.2

Optional Versions

PowerPlay LP, VLP, II

Resilience

AcerFlex Pad
*Other options available. Contact your Regional Sales Manager.

Slab Depression

3/4" (19mm) AcerFlex Pad, PowerPlay TP & II

- 25/32" (20mm) flooring - 2 3/8" (60mm)
- 33/32" (26mm) flooring - 2 5/8" (67mm)

Subfloor Construction

Pre-manufactured panels

System Type

Fixed Resilient

Testing Laboratory



U.S. Patent

Pending

Warranty

Lifetime available

It is the policy of Acer Flooring to continuously improve its line of products. Therefore, Acer Flooring reserves the right to change, modify or discontinue systems, specifications and accessories of all products at any time without notice or obligation to purchaser.



see us at
Sweets.com

