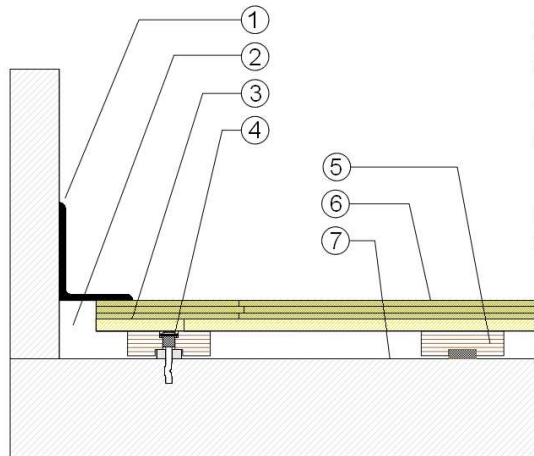


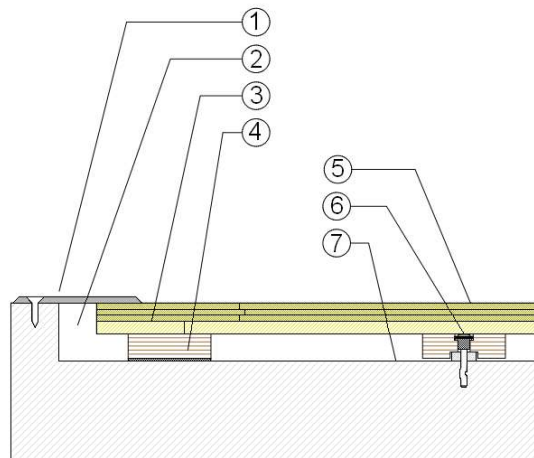
WALLBASE



1. 3" x 4" (76mm x 101mm) Vent Cove Base
2. 1-1/2" (38mm) min. Expansion Space
3. 1/2" x 5-1/2" (12mm x 140mm) Pine
4. Steel Concrete Anchor and Bushing
5. Engineered Plywood Sleeper with recessed 3/8" (10mm) VERT Pad
6. 25/32" (20mm) MFMA Maple Flooring
7. Vapor Retarder

2-1/4" (57mm)

THRESHOLD



1. 1/4" (6mm) Aluminum Threshold
2. 1-1/2" (38mm) min. Expansion Space
3. 1/2" x 5-1/2" (12mm x 140mm) Pine
4. Engineered Plywood Sleeper with Solid Blocking Attached
5. 25/32" (20mm) MFMA Maple Flooring
6. Steel Concrete Anchor and Bushing
7. Vapor Retarder

2-1/4" (57mm)

Description: ANCHORED POWERLOC LP

Resilience: 3/8" (20mm) VERT pads

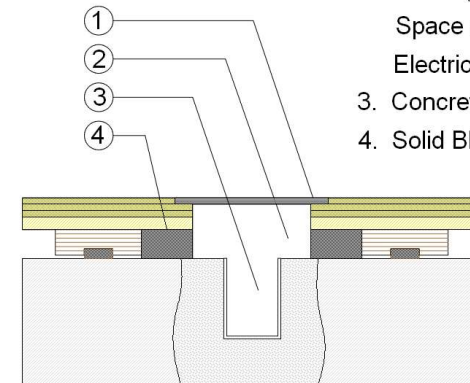
Drawn By: RR

Date: 4/22/20

Revisions

ID	Description	By	Date

EQUIPMENT



1. Floor Plate
2. 1-1/2" (38mm) Expansion Space at all Inserts and Electrical Penetrations
3. Concrete Floor Penetration
4. Solid Blocking at Insert