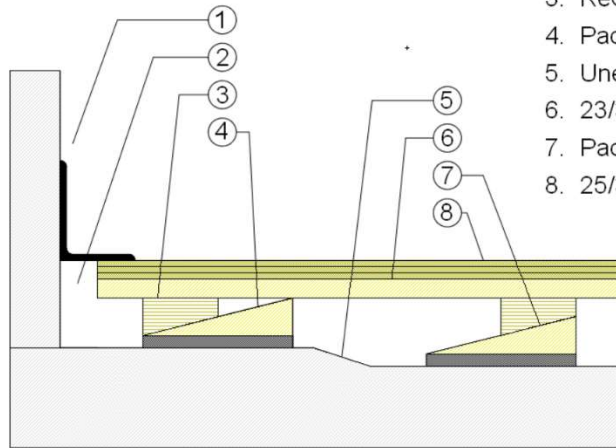


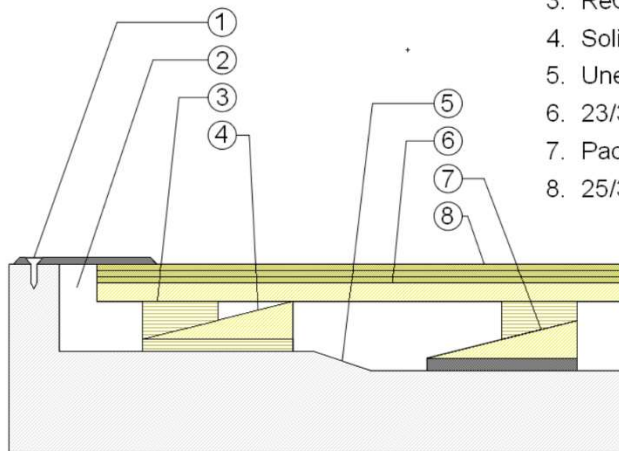
WALLBASE



1. 3" x 4" (76mm x 101mm) Vent Cove Base
2. 1-1/2" (38mm) min. Expansion Space
3. ReClaim III Sleeper
4. Padded Leveler at Minimum Profile
5. Uneven Concrete Subfloor
6. 23/32" (18mm) Plywood Subfloor
7. Padded Leveler at Maximum Profile
8. 25/32" (20mm) MFMA Maple Flooring

Adjustable
3-1/2" to 4-1/4"
(89mm to 108mm)

THRESHOLD



1. 3" x 4" (76mm x 101mm) Vent Cove Base
2. 1-1/2" (38mm) min. Expansion Space
3. ReClaim III Sleeper
4. Solid Blocking at Doorway
5. Uneven Concrete Subfloor
6. 23/32" (18mm) Plywood Subfloor
7. Padded Leveler at Maximum Profile
8. 25/32" (20mm) MFMA Maple Flooring

Adjustable
3-1/2" to 4-1/4"
(89mm to 108mm)

Description: RECLAIM III

Resilience: 1/2" (12mm) ECO pads

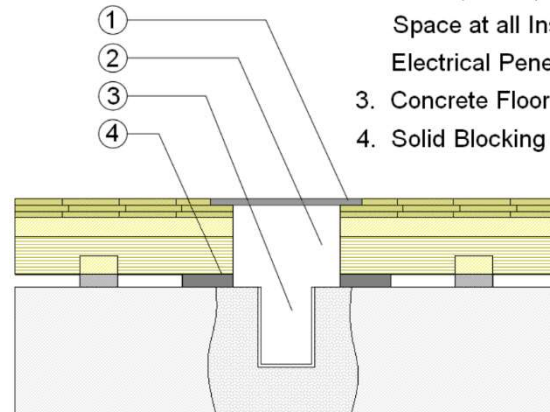
Drawn By: RR

Date: 6/12/24

Revisions

ID	Description	By	Date

EQUIPMENT



1. Floor Plate
2. 1-1/2" (38mm) Expansion Space at all Inserts and Electrical Penetrations
3. Concrete Floor Penetration
4. Solid Blocking at Insert