

# ReClaim III

## FLOATING RESILIENT SYSTEM

ReClaim III addresses concrete substrates that do not meet the standard flatness tolerance required when installing typical hardwood athletic floors. Such slab conditions mostly relate to removal and replacement of older floors which otherwise can require pouring expensive and time-consuming leveling material. Desired shock absorption and performance is provided by the inclusion of our ECO resilient pads.



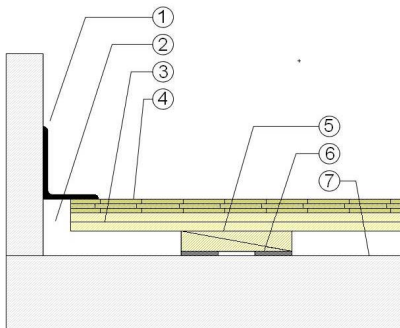
# ReClaim III

ReClaim III is a highly resilient system providing a method to adjust floor profile height where other major expense would otherwise be required.



- 1. Precision-milled Aacer Maple
- 2. APA Pre-assembled Subfloor Panel
- 3. Leveling Wedges
- 4. Uneven Substrate
- 5. 1/4" (6mm) ECO Resilient Pad
- 6. Vapor Retarder

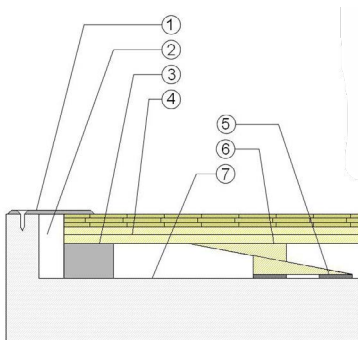
## WALL BASE



- 1. 3" x 4" (76mm x 101mm) Vent Cove Base
- 2. 1 1/2" (38mm) Min. Expansion Space
- 3. ReClaim III Subfloor
- 4. 25/32" (20mm) MFMA Maple Flooring
- 5. Leveling Wedges at Minimum Profile
- 6. ECO Resilient Pad
- 7. Uneven Concrete Substrate

Adjustable  
3-1/4" to 4-1/4"  
(83mm - 108mm)

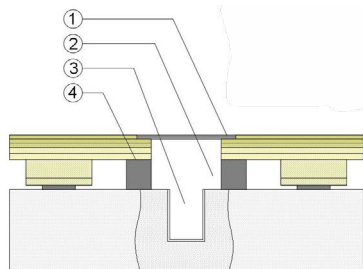
## THRESHOLD



- 1. 1/4" (6mm) Aluminum Threshold
- 2. 1 1/2" (38mm) Min. Expansion Space
- 3. Solid Blocking at Doorway
- 4. ReClaim III Subfloor
- 5. ECO Resilient Pad
- 6. Leveling Wedges at Maximum Profile
- 7. Uneven Concrete Substrate

Adjustable  
3-1/4" to 4-1/4"  
(83mm - 108mm)

## EQUIPMENT



- 1. Floor Plate
- 2. 1 1/2" (38mm) Expansion Space at all Insert & Electrical Penetrations
- 3. Concrete Floor Penetration
- 4. Solid Blocking at Insert

Green Status and LEED Contributors



- FSC® Certified Maple - MR
- FSC® Certified Subfloor Components - MR
- Environmental Quality - 4.2
- Regional Materials - MR

Resilience 1/4" (6mm) ECO Resilient Pad

Profile Height

- 25/32" (20mm) flooring - 3 1/4" - 4 1/4" (83mm - 108mm)
- 33/32" (26mm) flooring - 3 1/2" - 4 1/2" (89mm - 114mm)

Subfloor Construction Plywood Panel

System Type Floating Resilient

Testing Laboratory Partners



System Design



*It is the policy of Aacer Flooring to continuously improve its line of products. Therefore, Aacer Flooring reserves the right to change, modify or discontinue systems, specifications and accessories of all products at any time without notice or obligation to purchaser.*



see us at  
**Sweets.com**

