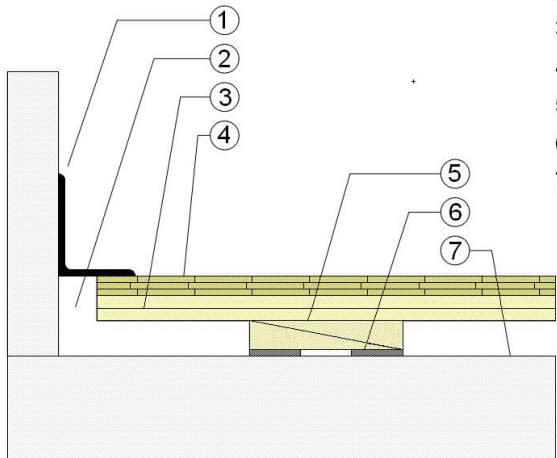


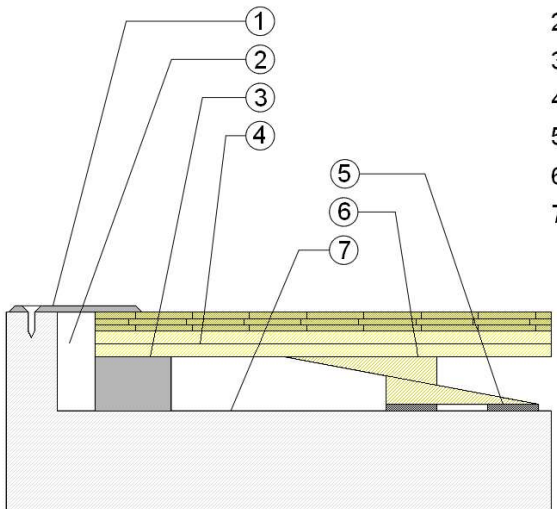
WALLBASE



1. 3" x 4" (76mm x 101mm) Vent Cove Base
2. 1-1/2" (38mm) min. Expansion Space
3. ReClaim III Subfloor
4. 25/32" (20mm) MFMA Maple Flooring
5. Leveling Wedges at Minimum Profile
6. ECO Resilient Pad
7. Uneven Concrete Substrate

Adjustable
3-1/4" to 4-1/4"
(83mm to 108mm)

THRESHOLD

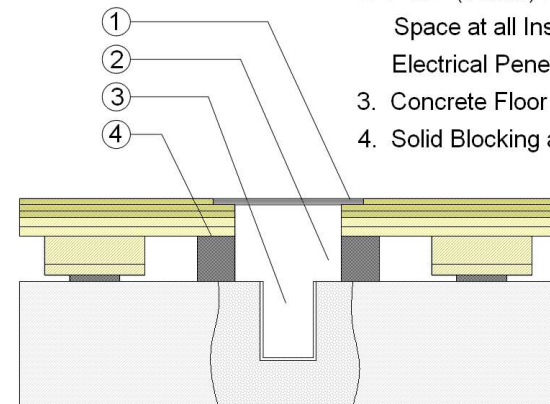


1. 1/4" (6mm) Aluminum Threshold
2. 1-1/2" (38mm) min. Expansion Space
3. Solid Blocking at Doorway
4. ReClaim III Subfloor
5. ECO Resilient Pad
6. Leveling Wedges at Maximum Profile
7. Uneven Concrete Substrate

Adjustable
3-1/4" to 4-1/4"
(83mm to 108mm)

Description: RECLAIM III			
Resilience: 1/4" (6mm) ECO pads			
Drawn By: RR		Date: 7/13/20	
Revisions			
ID	Description	By	Date

EQUIPMENT



1. Floor Plate
2. 1-1/2" (38mm) Expansion Space at all Inserts and Electrical Penetrations
3. Concrete Floor Penetration
4. Solid Blocking at Insert