

# ScissorLoc™ LP

## FLOATING SYSTEMS

Aacer ScissorLoc LP offers a lower profile of Aacer's original floor system with the same excellent natural ventilation capabilities due to its intersecting solid wood subfloor component design. ScissorLoc LP is designed to withstand heavy loads while still providing a resilient and controlled playing surface.

Aacer's PowerVent™ Advanced airflow system is a popular accompaniment to this system. It maintains balanced humidity above and below the floor as well as detects moisture to initiate mechanical airflow drying.



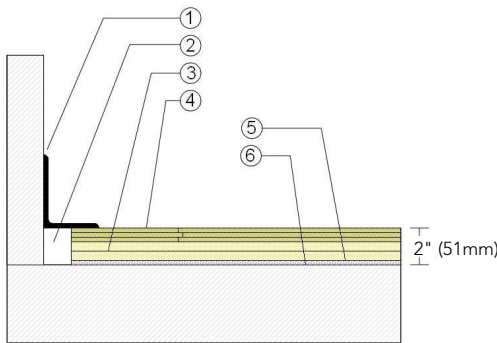
# ScissorLoc™ LP

Available ScissorLoc™ LP provides an intersecting subfloor design for premium airflow and uniform play.



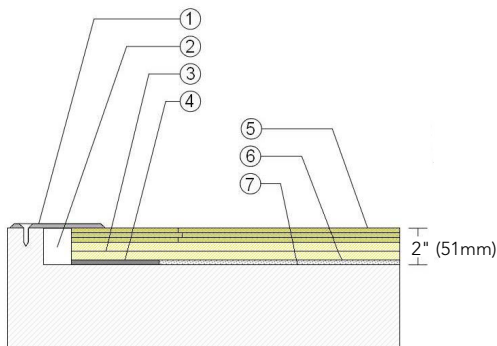
- |                                   |                                |
|-----------------------------------|--------------------------------|
| 1. Precision-milled Acer Maple    | 4. 1/4" (6mm) Performance Foam |
| 2. Kiln-dried Pine Upper Subfloor | 5. Vapor Retarder              |
| 3. Kiln-dried Pine Lower Subfloor | 6. PowerVent Airflow System    |

## WALL BASE



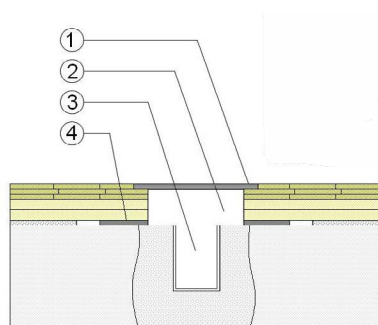
- 3" x 4" (76mm x 101mm) Vent Cove Base
- 1 1/2" (38mm) Min. Expansion Space
- 1/2" x 5-1/2" (12mm x 140mm) Pine Upper and Lower Subfloor Layers
- 25/32" (20mm) MFMA Maple Flooring
- 1/4" (6mm) Resilient Foam Blanket
- Vapor Retarder

## THRESHOLD



- 1/4" (6mm) Aluminum Threshold
- 1 1/2" (38mm) Min. Expansion Space
- 1/2" x 5-1/2" (12mm x 140mm) Pine Upper and Lower Subfloor Layers
- Solid Blocking at Doorway
- 25/32" (20mm) MFMA Maple Flooring
- 1/4" (6mm) Resilient Foam Blanket
- Vapor Retarder

## EQUIPMENT



- Floor Plate
- 1 1/2" (38mm) Min. Expansion Space at all Inserts & Electrical Penetrations
- Concrete Floor Penetration
- Solid Blocking at Insert

Certified



Green Status and LEED Contributors



- FSC® Certified Maple - MR
- FSC® Certified Subfloor Components - MR
- Environmental Quality - EQ
- Regional Materials - MR

Resilience

1/4" Performance Foam  
\*Other pad options available.

Slab Depression

- 25/32" (20mm) flooring - 2" (51mm)
- 33/32" (26mm) flooring - 2 1/4" (57mm)

Optional ScissorLoc™ Systems

ScissorLoc™ V-Hex  
ScissorLoc™ I  
ScissorLoc™ II  
ScissorLoc™ III

Optional Protection System

PowerVent™ Advanced Airflow System

Subfloor Construction

Intersecting Kiln-dried Solid Pine

System Type

Floating

Testing Laboratory Partners



U.S. Patent #

#5,299,401

*It is the policy of Aacer Flooring to continuously improve its line of products. Therefore, Aacer Flooring reserves the right to change, modify or discontinue systems, specifications and accessories of all products at any time without notice or obligation to purchaser.*



see us at  
**Sweets.com**

