

Programme I

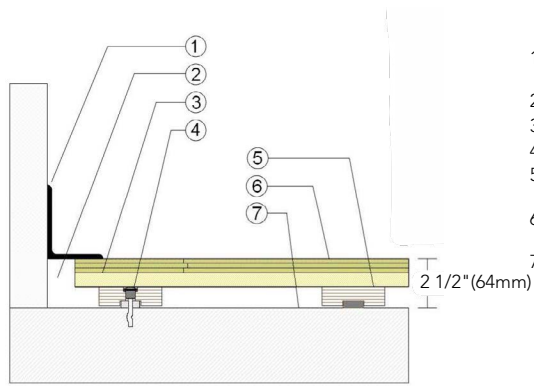
FIXED RESILIENT SYSTEMS

An excellent choice for responding to activities, impacts and loads applied under a wide range of stage floor usage. Programme I includes VERT resilient pads manufactured from a dilatant formula known for excellent resiliency and vibration damping characteristics. Special machined sleepers include recessed pad housing to limit pressure on elastic material as well as on subfloor components when impacted by heavy loads.



Programme I

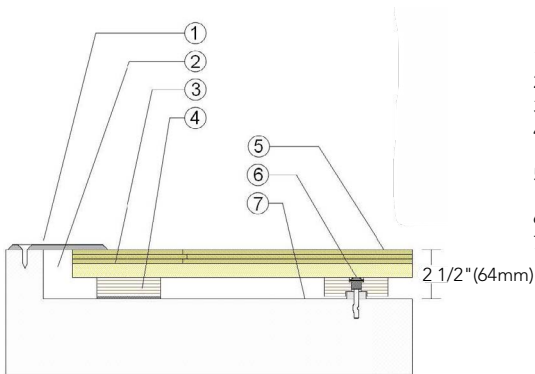
WALLBASE Maple Floor Surface



1. 3" x 4" (76mm x 101mm) Vent Cove Base
2. 1-1/2" (38mm) Min. Expansion Space
3. 23/32" (19mm) Plywood Subfloor
4. Steel Concrete Anchor and Bushing
5. Engineered Plywood Sleeper with recessed 3/8" (10mm) VERT Pad
6. 25/32" (20mm) MFMA Maple Flooring
7. Vapor Retarder

2 1/2" (64mm)

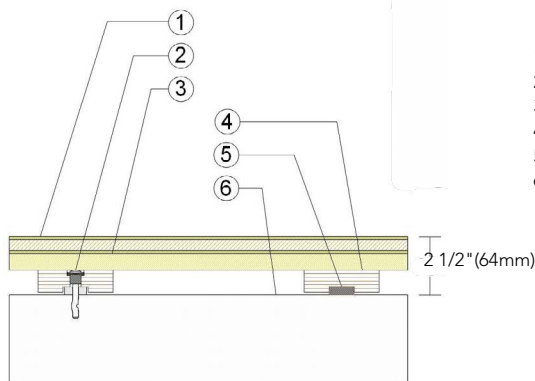
THRESHOLD Maple Floor Surface



1. 1/4" (6mm) Aluminum Threshold
2. 1-1/2" (38mm) Min. Expansion Space
3. 23/32" (19mm) Plywood Subfloor
4. Engineered Plywood Sleeper with Solid Blocking Attached
5. 25/32" (20mm) MFMA Maple Flooring
6. Steel Concrete Anchor and Bushing
7. Vapor Retarder

2 1/2" (64mm)

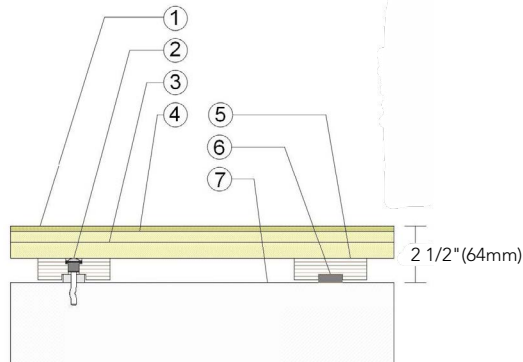
HARDBOARD Panel Floor Surface



1. Hardboard Faced Laminate Panel
2. Steel Concrete Anchor and Bushing
3. 23/32" (19mm) Plywood Subfloor
4. Engineered Plywood Sleeper
5. Recessed VERT Resilient Pad
6. Vapor Retarder

2 1/2" (64mm)

HARDBOARD Layer Floor Surface



1. 1/4" (6mm) Hardboard Surface Layer
2. Steel Concrete Anchor and Bushing
3. 23/32" (19mm) Plywood Subfloor
4. 15/32" (12mm) Added Plywood Layer
5. Engineered Plywood Sleeper
6. Recessed VERT Resilient Pad
7. Vapor Retarder

2 1/2" (64mm)

Anchorage

Green Status and LEED Contributors

Resilience

Slab Depression

Optional Programme Systems

Optional Protection System

Subfloor Construction

System Type

Testing Laboratory Partners

Patent

Drill and Pin



- FSC® Certified Maple - MR
- FSC® Certified Subfloor Components - MR
- Environmental Quality - EQ
- Regional Materials - MR

3/8" (10mm) VERT Pad



- 25/32" (20mm) Flooring - 2-1/2" (64mm)

Programme II
Programme III

PowerVent™ Advanced Airflow System

Engineered sleepers and subfloor

Fixed Resilient



#10,174,509

It is the policy of Aacer Flooring to continuously improve its line of products. Therefore, Aacer Flooring reserves the right to change, modify or discontinue systems, specifications and accessories of all products at any time without notice or obligation to purchaser.



see us at
Sweets.com

