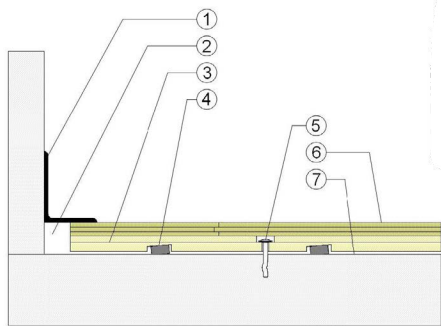


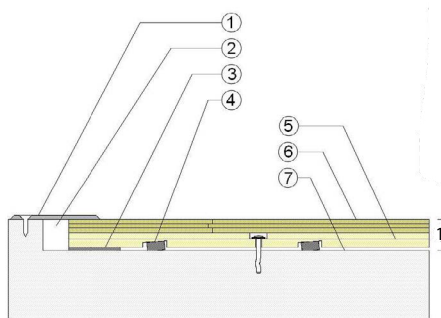
Acer Programme III Stage

WALLBASE Maple Floor Surface



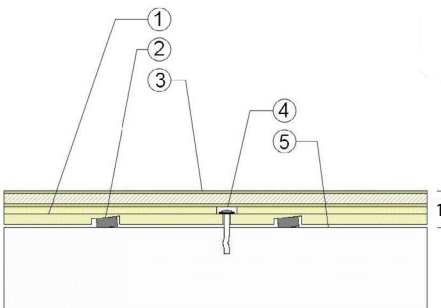
1. 3" x 4" (76mm x 101mm) Vent Cove Base
2. 1-1/2" (38mm) Min. Expansion Space
3. Programme III Subfloor Panel
4. Recessed Resilient ECO Pad
5. Concrete Anchor Pin Assembly
6. 25/32" (20mm) MFMA Maple Flooring
7. Vapor Retarder

THRESHOLD Maple Floor Surface



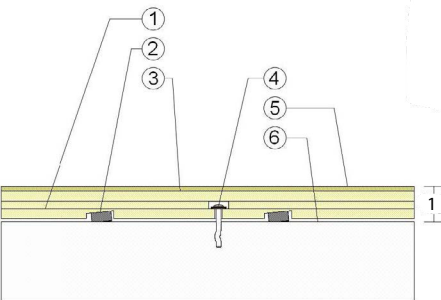
1. 1/4" (6mm) Aluminum Threshold
2. 1-1/2" (38mm) Min. Expansion Space
3. Solid Blocking at Doorway
4. Recessed Resilient ECO Pad
5. Programme III Subfloor Panel
6. 25/32" (20mm) MFMA Maple Flooring
7. Vapor Retarder

HARDBOARD Panel Floor Surface



1. Programme III Subfloor Panel
2. Recessed Resilient ECO Pad
3. Hardboard Faced Laminate Panel
4. Concrete Anchor Pin Assembly
5. Vapor Retarder

HARDBOARD Layer Floor Surface



1. Programme III Subfloor Panel
2. Recessed Resilient ECO Pad
3. 15/32" (12mm) Added Plywood Layer
4. Concrete Anchor Pin Assembly
5. 1/4" (6mm) Hardboard Surface Layer
6. Vapor Retarder

Anchorage

Collared Steel Drive Pin

Green Status and LEED Contributors



- FSC® Certified Maple - MR
- FSC® Certified Subfloor Components - MR
- Environmental Quality - EQ
- Regional Materials - MR

Resilience

1/2" (12mm) ECO Pad

Slab Depression

• 25/32" (20mm) Flooring - 1-3/4" (44mm)

Floor Surface Options

- 25/32" (20mm) Maple Flooring
- 25/32" (20mm) Red Oak Flooring
- Hardboard Laminate Panel
- Hardboard Surface Layer

Optional Programme Systems

Programme I Stage
Programme II Stage

Subfloor Construction

Pre-manufactured Panels

System Type

Fixed Resilient

Testing Laboratory Partners



It is the policy of Acer Flooring to continuously improve its line of products. Therefore, Acer Flooring reserves the right to change, modify or discontinue systems, specifications and accessories of all products at any time without notice or obligation to purchaser.



see us at Sweets.com

