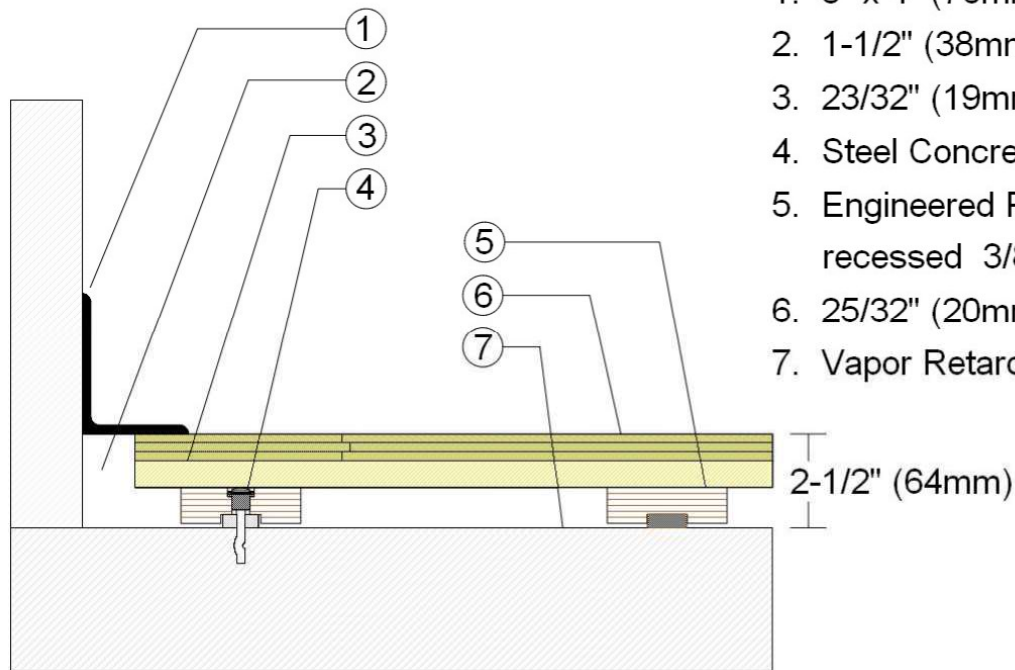


Revision	Description	Drawn By / Date
A	Programme I Stage – Maple Floor Surface	RR / 10-26-20

PROGRAMME I Stage Floor

F1 Maple Floor Surface Option



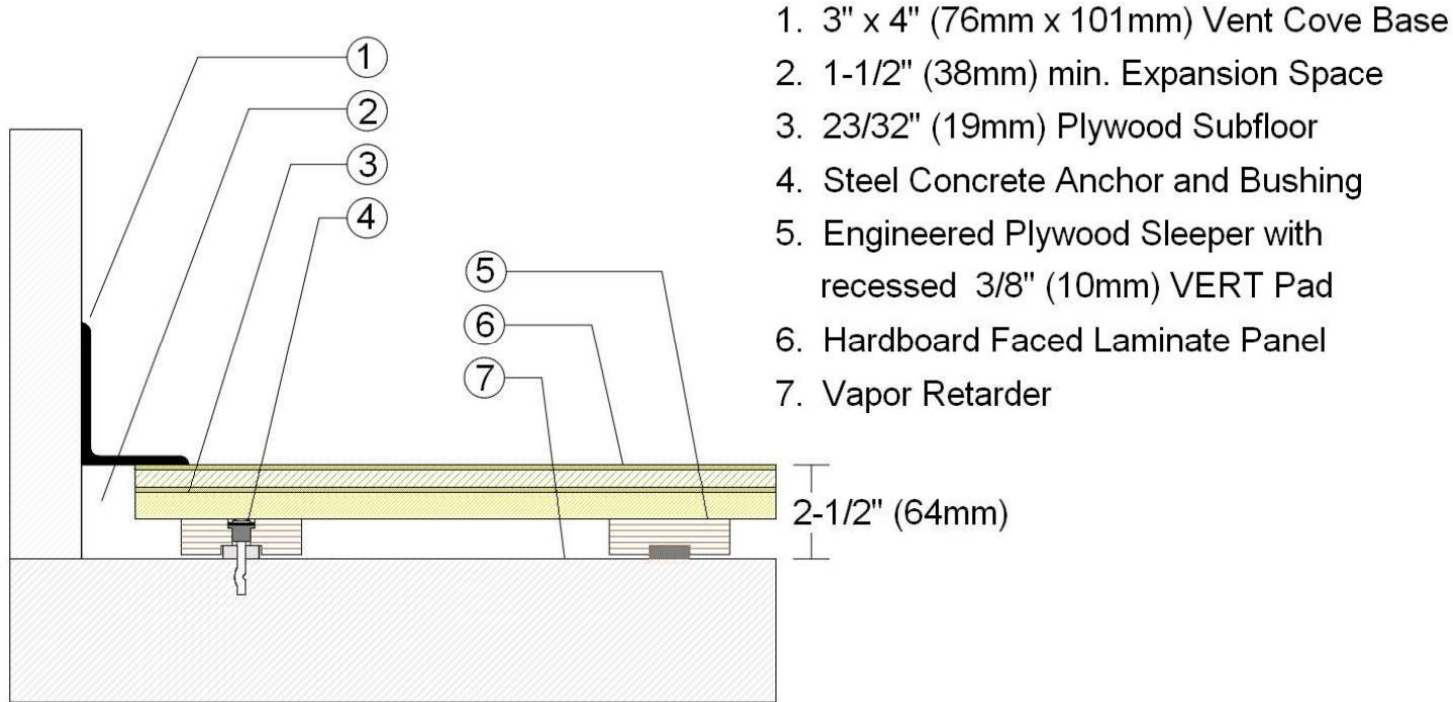
1. 3" x 4" (76mm x 101mm) Vent Cove Base
2. 1-1/2" (38mm) min. Expansion Space
3. 23/32" (19mm) Plywood Subfloor
4. Steel Concrete Anchor and Bushing
5. Engineered Plywood Sleeper with recessed 3/8" (10mm) VERT Pad
6. 25/32" (20mm) MFMA Maple Flooring
7. Vapor Retarder



Revision	Description	Drawn By / Date
A	Programme I Stage – Hardboard Faced Laminate Surface	RR / 10-26-20

PROGRAMME I Stage Floor

F2 Hardboard Faced Laminate Panel Surface Option

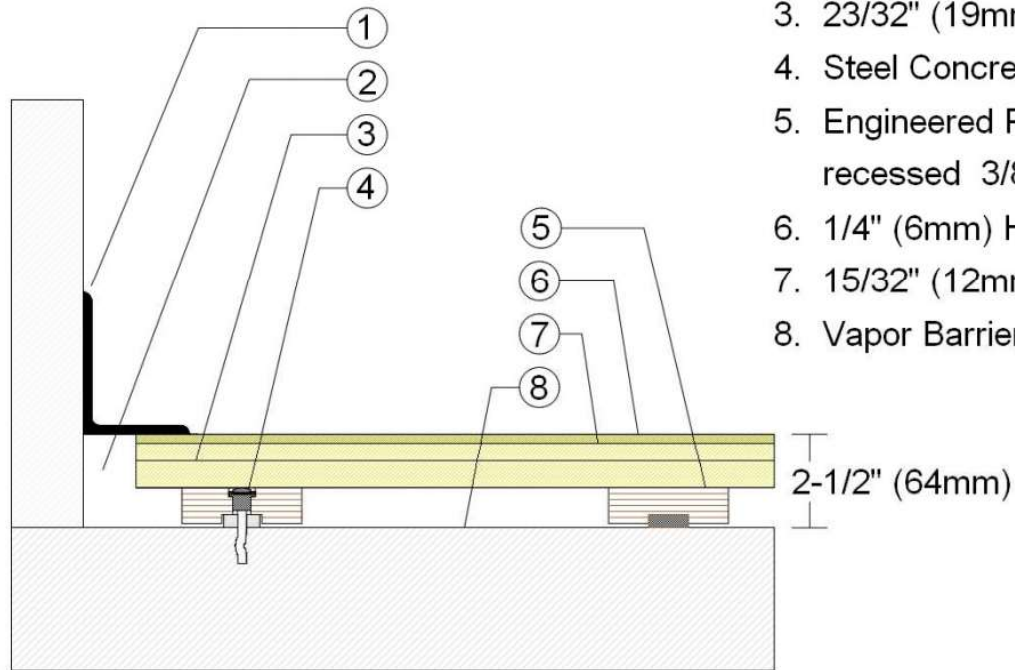


Revision	Description	Drawn By / Date
A	Programme I Stage – Hardboard Floor Surface	RR / 10-26-20

PROGRAMME I Stage Floor

F3 Hardboard Surface Option

[Added 15/32" (12mm) plywood layer]



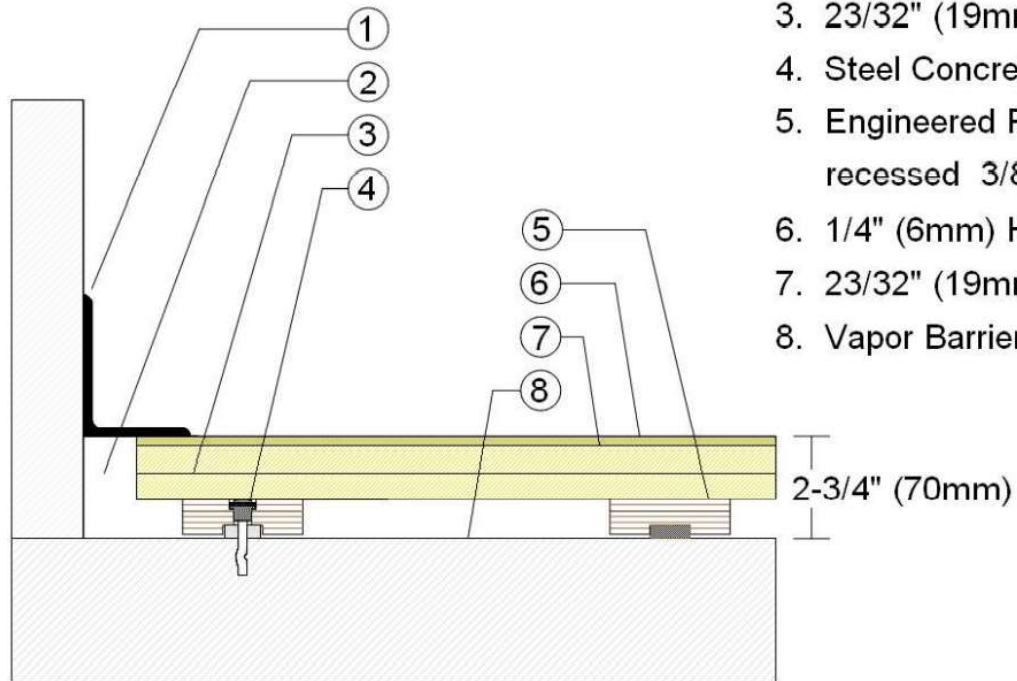
1. 3" x 4" (76mm x 101mm) Vent Cove Base
2. 1-1/2" (38mm) min. Expansion Space
3. 23/32" (19mm) Plywood Subfloor
4. Steel Concrete Anchor and Bushing
5. Engineered Plywood Sleeper with recessed 3/8" (10mm) VERT Pad
6. 1/4" (6mm) Hardboard Surface Layer
7. 15/32" (12mm) Added Plywood Layer
8. Vapor Barrier

Revision	Description	Drawn By / Date
A	Programme I Stage – Hardboard Floor Surface	RR / 10-26-20

PROGRAMME I Stage Floor

F3 Hardboard Surface Option

[Added 23/32" (19mm) plywood layer]



1. 3" x 4" (76mm x 101mm) Vent Cove Base
2. 1-1/2" (38mm) min. Expansion Space
3. 23/32" (19mm) Plywood Subfloor
4. Steel Concrete Anchor and Bushing
5. Engineered Plywood Sleeper with recessed 3/8" (10mm) VERT Pad
6. 1/4" (6mm) Hardboard Surface Layer
7. 23/32" (19mm) Added Plywood Layer
8. Vapor Barrier