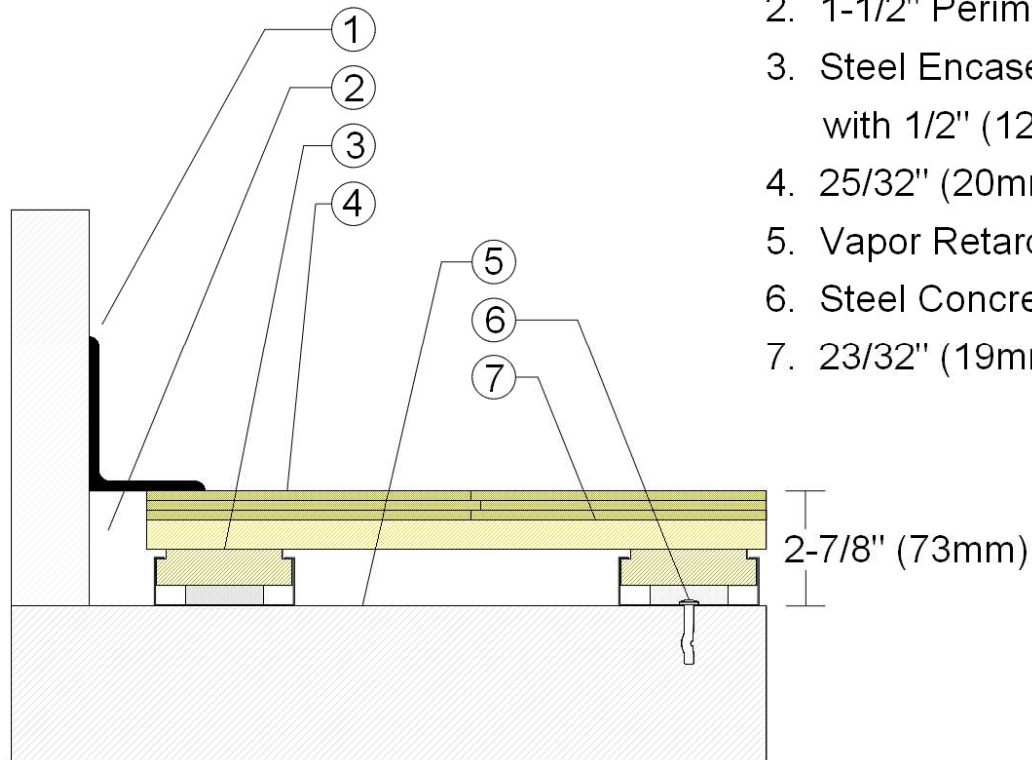


Revision	Description	Drawn By / Date
A	Programme II Stage – Maple Floor Surface	RR / 10-26-20

PROGRAMME II Stage Floor

F1 Maple Floor Surface Option

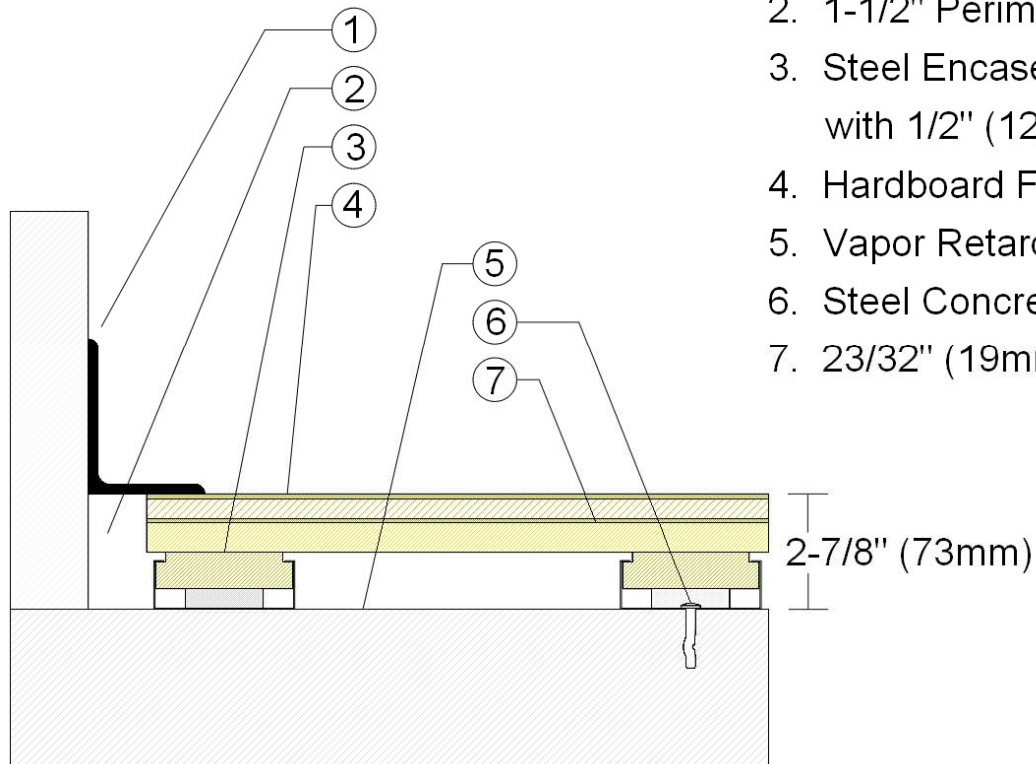


1. 3" x 4" (76mm x 101mm) Vent Cove Base
2. 1-1/2" Perimeter Expansion Space
3. Steel Encased Plywood Sleeper
with 1/2" (12mm) VERT Resileint Pad
4. 25/32" (20mm) MFMA Maple Flooring
5. Vapor Retarder
6. Steel Concrete Anchor
7. 23/32" (19mm) Plywood Subfloor

Revision	Description	Drawn By / Date
A	Programme II Stage – Hardboard Faced Laminate Surface	RR / 10-26-20

PROGRAMME II Stage Floor

F2 Hardboard Faced Laminate Panel Surface Option



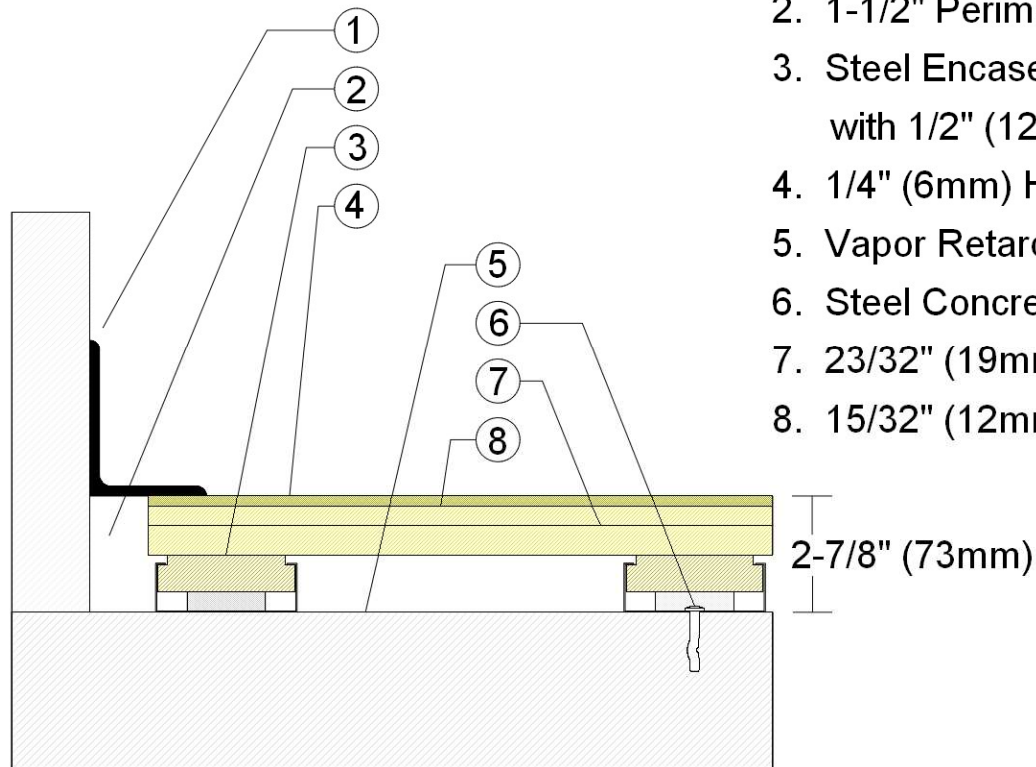
1. 3" x 4" (76mm x 101mm) Vent Cove Base
2. 1-1/2" Perimeter Expansion Space
3. Steel Encased Plywood Sleeper
with 1/2" (12mm) VERT Resileint Pad
4. Hardboard Faced Laminate Panel
5. Vapor Retarder
6. Steel Concrete Anchor
7. 23/32" (19mm) Plywood Subfloor

Revision	Description	Drawn By / Date
A	Programme II Stage – Hardboard Floor Surface	RR / 10-26-20

PROGRAMME II Stage Floor

F3 Hardboard Surface Option

[Added 15/32" (12mm) plywood layer]



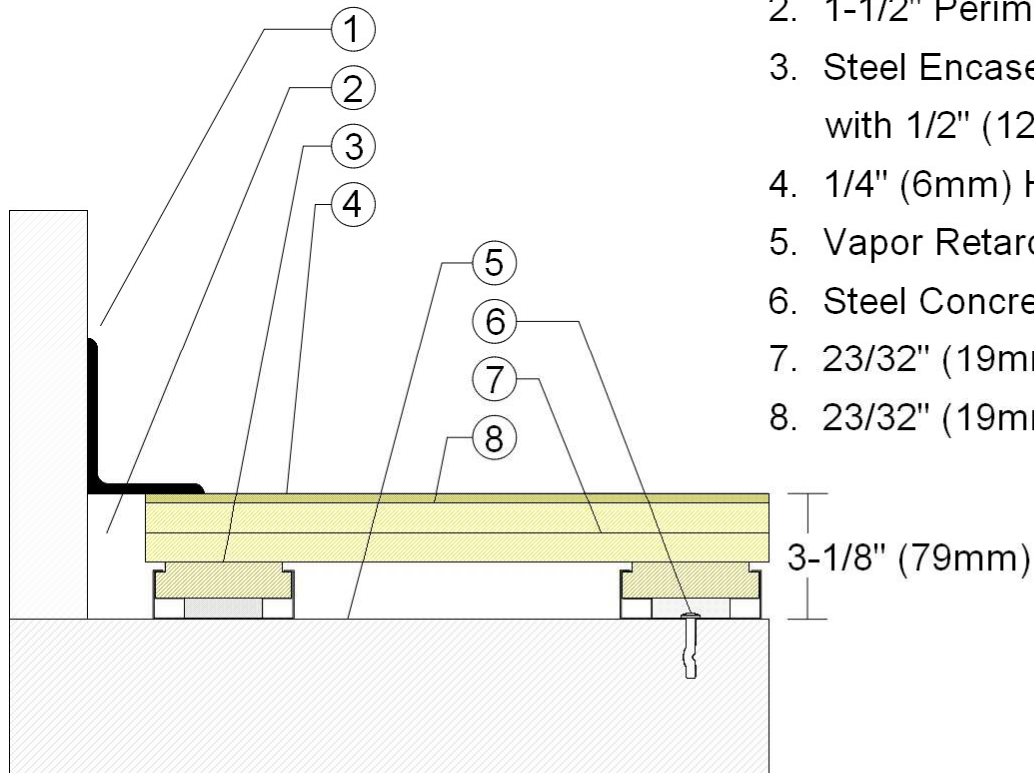
1. 3" x 4" (76mm x 101mm) Vent Cove Base
2. 1-1/2" Perimeter Expansion Space
3. Steel Encased Plywood Sleeper
with 1/2" (12mm) VERT Resileint Pad
4. 1/4" (6mm) Hardboard Surface Layer
5. Vapor Retarder
6. Steel Concrete Anchor
7. 23/32" (19mm) Plywood Subfloor
8. 15/32" (12mm) Added Plywood layer

Revision	Description	Drawn By / Date
A	Programme II Stage – Hardboard Floor Surface	RR / 10-26-20

PROGRAMME II Stage Floor

F3 Hardboard Surface Option

[Added 23/32" (19mm) plywood layer]



1. 3" x 4" (76mm x 101mm) Vent Cove Base
2. 1-1/2" Perimeter Expansion Space
3. Steel Encased Plywood Sleeper
with 1/2" (12mm) VERT Resileint Pad
4. 1/4" (6mm) Hardboard Surface Layer
5. Vapor Retarder
6. Steel Concrete Anchor
7. 23/32" (19mm) Plywood Subfloor
8. 23/32" (19mm) Added Plywood Layer