



INFINITY
Wood Floors



Revision

A

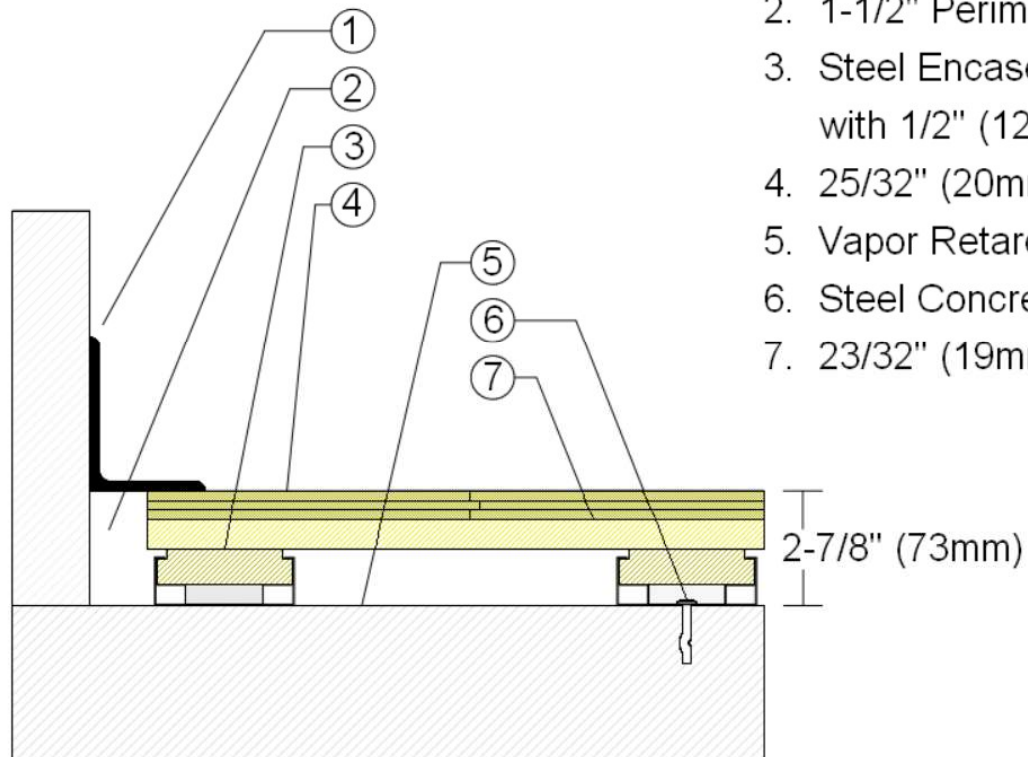
Description

Programme II Stage – Maple Floor Surface

Drawn By / Date

RR / 1-22-23

PROGRAMME II Stage Floor F1 Maple Floor Surface Option



1. 3" x 4" (76mm x 101mm) Vent Cove Base
2. 1-1/2" Perimeter Expansion Space
3. Steel Encased Plywood Sleeper with 1/2" (12mm) ECO Resilient Pad
4. 25/32" (20mm) MFMA Maple Flooring
5. Vapor Retarder
6. Steel Concrete Anchor
7. 23/32" (19mm) Plywood Subfloor



INFINITY
Wood Floors



Revision

A

Description

Programme II Stage – Hardboard Faced Laminate Surface

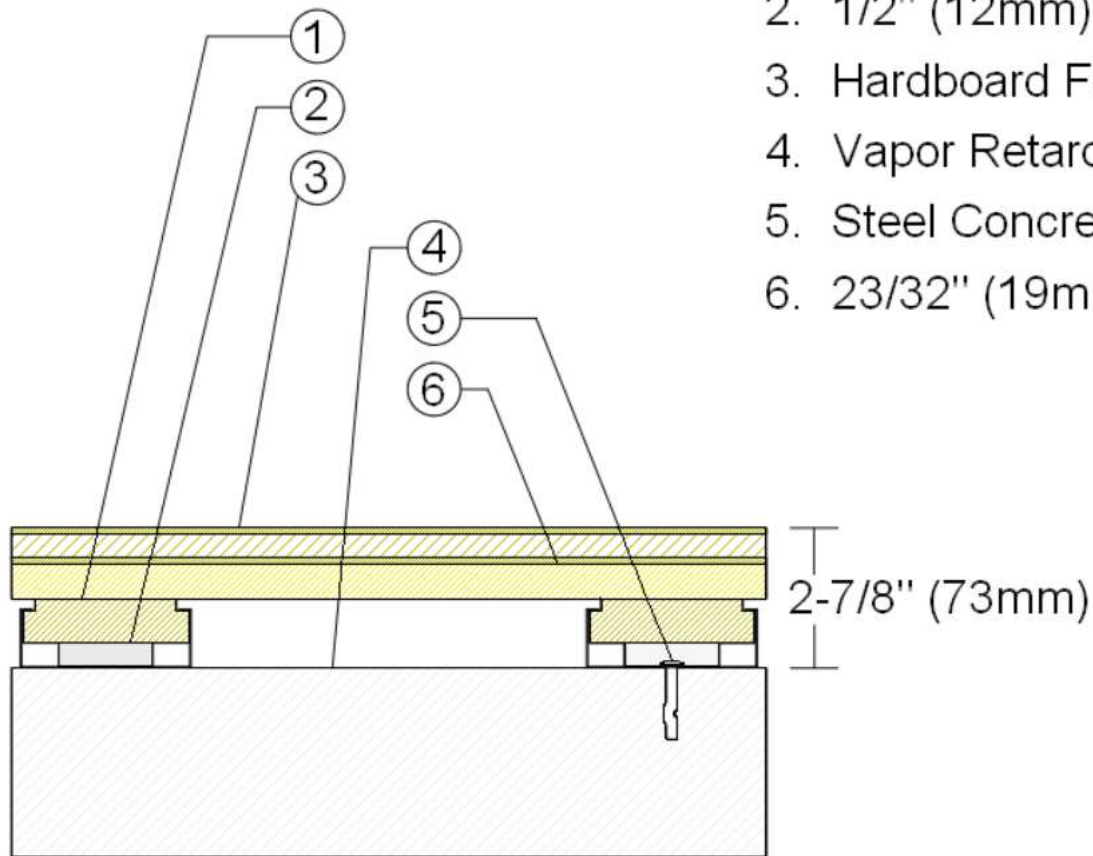
Drawn By / Date

RR / 1-22-23

PROGRAMME II Stage Floor

F2 Hardboard Faced Laminate Panel Surface Option

1. Steel Encased Plywood Sleeper
2. 1/2" (12mm) ECO Resilient Pad
3. Hardboard Faced Laminate Panel
4. Vapor Retarder
5. Steel Concrete Anchor
6. 23/32" (19mm) Plywood Subfloor





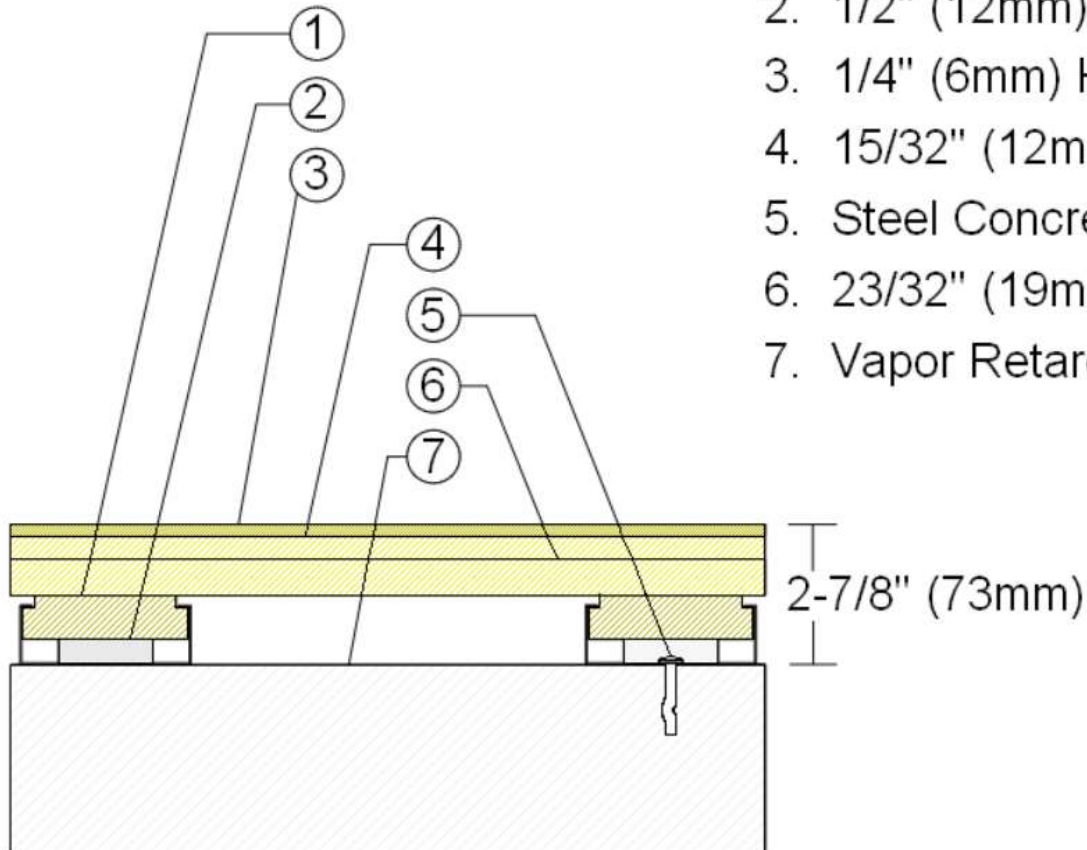
Revision	Description	Drawn By / Date
A	Programme II Stage – Hardboard Floor Surface	RR / 1-22-23

PROGRAMME II Stage Floor

F3 Hardboard Surface Option

[Added 15/32" (12mm) plywood layer]

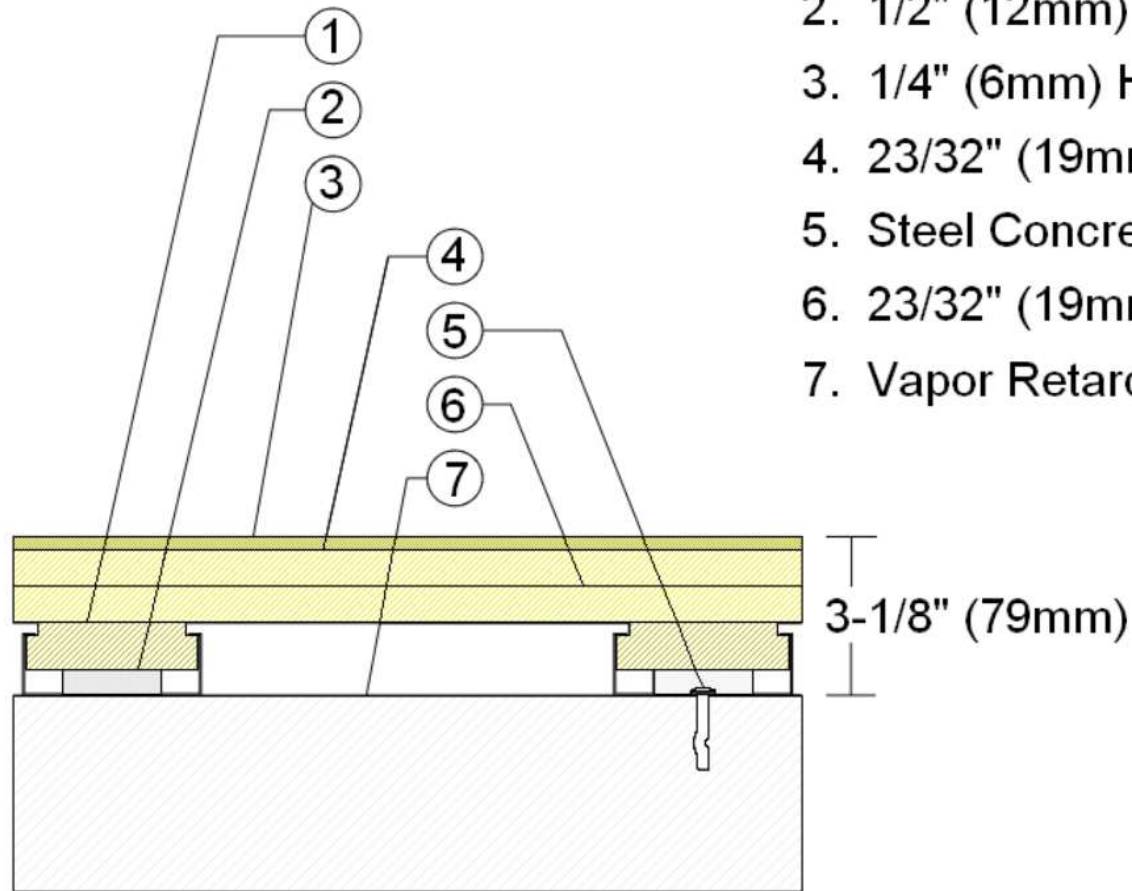
1. Steel Encased Plywood Sleeper
2. 1/2" (12mm) ECO Resilient Pad
3. 1/4" (6mm) Hardboard Surface Layer
4. 15/32" (12mm) Added Plywood Layer
5. Steel Concrete Anchor
6. 23/32" (19mm) Plywood Subfloor
7. Vapor Retarder





Revision	Description	Drawn By / Date
A	Programme II Stage – Hardboard Floor Surface	RR / 1-22-23

PROGRAMME II Stage Floor F3 Hardboard Surface Option



1. Steel Encased Plywood Sleeper
2. 1/2" (12mm) ECO Resilient Pad
3. 1/4" (6mm) Hardboard Surface Layer
4. 23/32" (19mm) Added Plywood Layer
5. Steel Concrete Anchor
6. 23/32" (19mm) Plywood Subfloor
7. Vapor Retarder