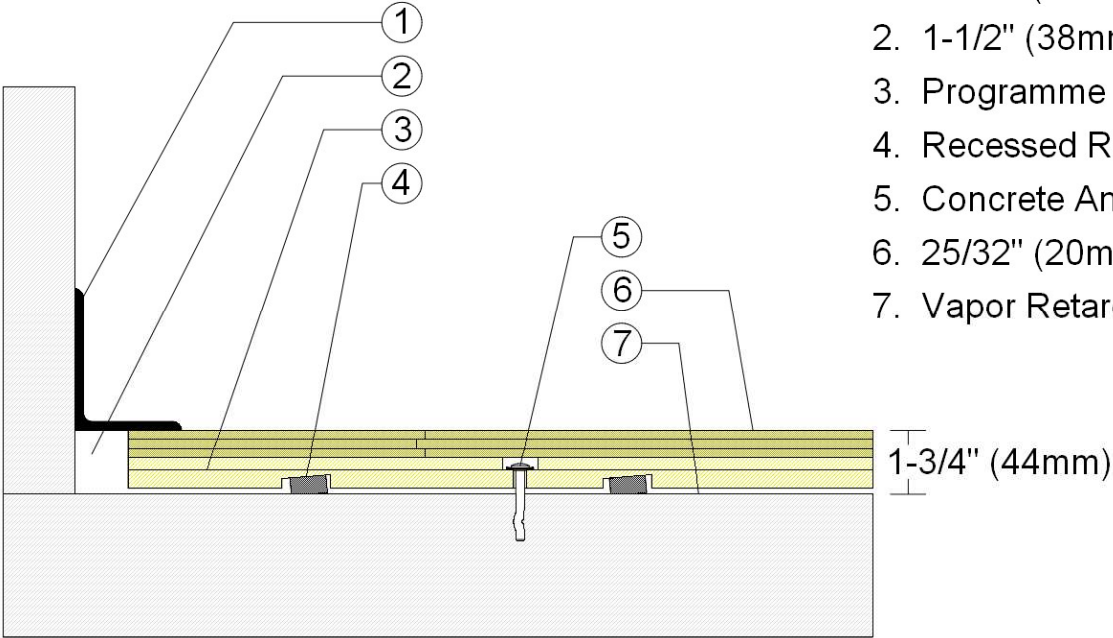




Revision	Description	Drawn By / Date
A	Programme III Stage – Maple Floor Surface	RR / 11-11-20

PROGRAMME III Stage Floor

F1 Maple Floor Surface Option



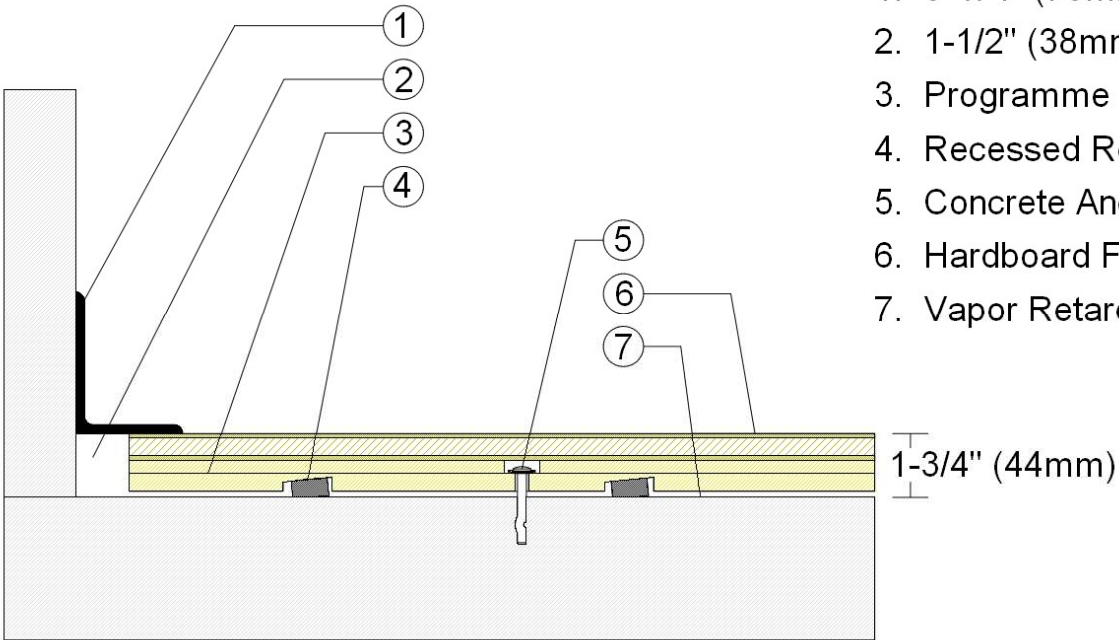
- 1. 3" x 4" (76mm x 101mm) Vent Cove Base
- 2. 1-1/2" (38mm) min. Expansion Space
- 3. Programme III Subfloor Panel
- 4. Recessed Resilient ECO Pad
- 5. Concrete Anchor Pin Assembly
- 6. 25/32" (20mm) MFMA Maple Flooring
- 7. Vapor Retarder



Revision	Description	Drawn By / Date
A	Programme III Stage – Hardboard Faced Laminate Surface	RR / 11-11-20

PROGRAMME III Stage Floor

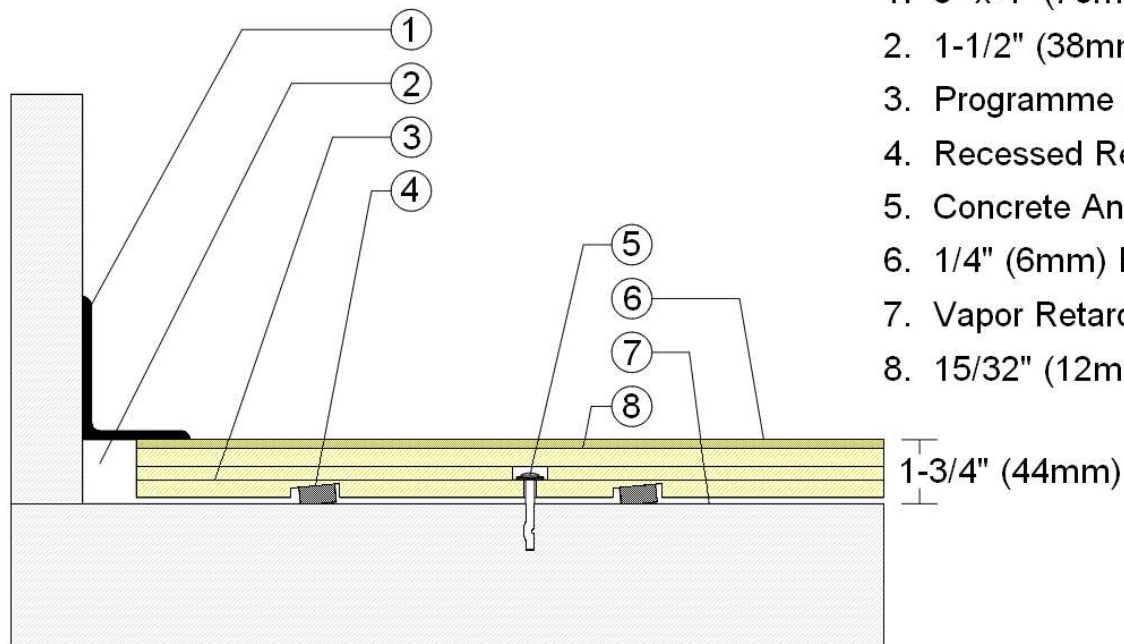
F2 Hardboard Faced Laminate Panel Surface Option



- 1. 3" x 4" (76mm x 101mm) Vent Cove Base
- 2. 1-1/2" (38mm) min. Expansion Space
- 3. Programme III Subfloor Panel
- 4. Recessed Resilient ECO Pad
- 5. Concrete Anchor Pin Assembly
- 6. Hardboard Faced Laminate Panel
- 7. Vapor Retarder

Revision	Description	Drawn By / Date
A	Programme III Stage – Hardboard Floor Surface	RR / 11-11-20

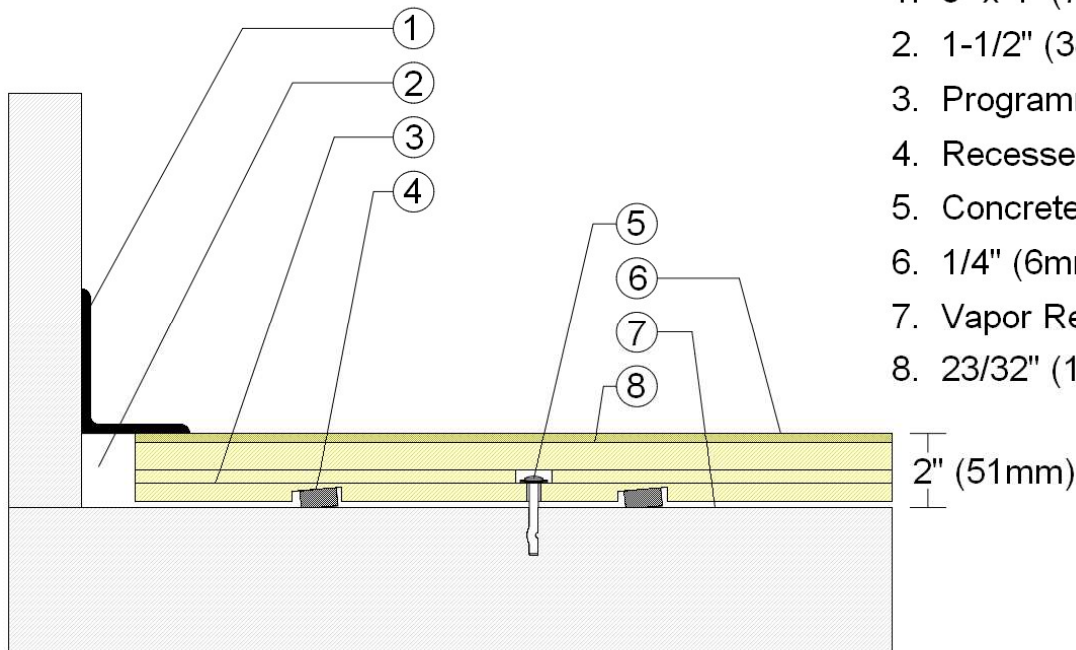
PROGRAMME III Stage Floor
F3 Hardboard Surface Option
 [Added 15/32" (12mm) plywood layer]



1. 3" x 4" (76mm x 101mm) Vent Cove Base
2. 1-1/2" (38mm) min. Expansion Space
3. Programme III Subfloor Panel
4. Recessed Resilient ECO Pad
5. Concrete Anchor Pin Assembly
6. 1/4" (6mm) Hardboard Surface Layer
7. Vapor Retarder
8. 15/32" (12mm) Added Plywood Layer

Revision	Description	Drawn By / Date
A	Programme III Stage – Hardboard Floor Surface	RR / 11-11-20

PROGRAMME III Stage Floor
F3 Hardboard Surface Option
 [Added 23/32" (19mm) plywood layer]



1. 3" x 4" (76mm x 101mm) Vent Cove Base
2. 1-1/2" (38mm) min. Expansion Space
3. Programme III Subfloor Panel
4. Recessed Resilient ECO Pad
5. Concrete Anchor Pin Assembly
6. 1/4" (6mm) Hardboard Surface Layer
7. Vapor Retarder
8. 23/32" (19mm) Added Plywood Layer