

ScissorLoc™ V-Hex AR

FIXED RESILIENT SYSTEMS

ScissorLoc™ V-Hex AR is an Anchored Resilient floor system offering uniform high shock absorption and basketball rebound. The inclusion of patented VERT™ pads provides optimum resilient life and vibration damping combined with a ventilating subfloor design for premium air flow which can be further enhanced when including our optional PowerVent system.



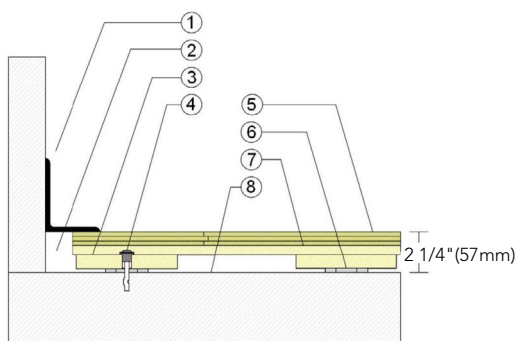
ScissorLoc™ V-Hex AR

ScissorLoc™ V-Hex AR offers excellent athletic response, premium subfloor ventilation, and resilient VERT™ high performance pads.



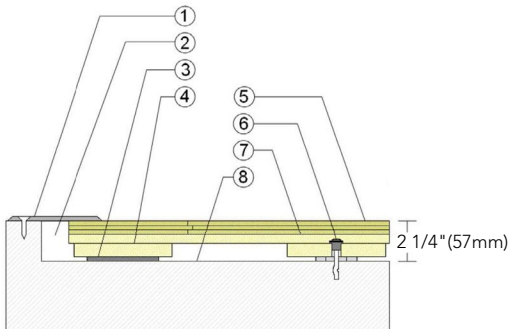
- 1. Precision-milled Aacer Maple
- 2. Subfloor Layer
- 3. Steel Concrete Anchor & Bushing
- 4. 1/4" (6mm) VERT Resilient Pad
- 5. Softwood Sleeper
- 6. Vapor Retarder
- 7. PowerVent Airflow System

WALL BASE



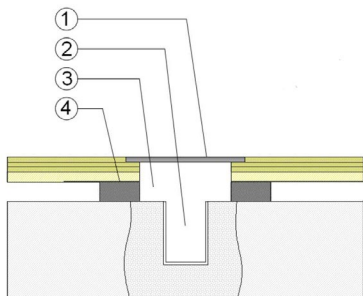
- 1. 3" x 4" (76mm x 101mm) Vent Cove Base
- 2. 1-1/2" (38mm) Min. Expansion Space
- 3. 3/4" x 5-1/2" (19mm x 140mm) Sleeper
- 4. Steel Concrete Anchor and Bushing
- 5. 25/32" (20mm) MFMA Maple Flooring
- 6. VERT Resilient Pad
- 7. 1/2" x 5-1/2" (12mm x 140mm) Subfloor Layer
- 8. Vapor Retarder

THRESHOLD



- 1. 1/4" (6mm) Aluminum Threshold
- 2. 1-1/2" (38mm) Min. Expansion Space
- 3. Solid Blocking at Doorway
- 4. 3/4" x 5-1/2" (19mm x 140mm) Sleeper
- 5. 25/32" (20mm) MFMA Maple Flooring
- 6. Steel Concrete Anchor and Bushing
- 7. 1/2" x 5-1/2" (12mm x 140mm) Subfloor Layer
- 8. Vapor Retarder

EQUIPMENT



- 1. Floor Plate
- 2. 1-1/2" (38mm) Min. Expansion Space at all Inserts & Electrical Penetrations
- 3. Concrete Floor Penetration
- 4. Solid Blocking at Insert

Certified



Green Status and LEED Contributors



- FSC® Certified Maple - MR
- FSC® Certified Subfloor Components - MR
- Environmental Quality - EQ
- Regional Materials - MR

Resilience

1/4" VERT Hex Pad



Slab Depression

- 25/32" (20mm) flooring - 2 1/4" (57mm)
- 33/32" (26mm) flooring - 2 1/2" (64mm)

Optional ScissorLoc™ Systems

ScissorLoc™ V-Hex
ScissorLoc™ I
ScissorLoc™ II
ScissorLoc™ III
ScissorLoc™ LP

Optional Protection System

PowerVent™ Advanced Airflow System

Subfloor Construction

Softwood Sleeper and Subfloor

System Type

Fixed Resilient

Testing Laboratory Partners



U.S. Patent #

#10,174,509

It is the policy of Aacer Flooring to continuously improve its line of products. Therefore, Aacer Flooring reserves the right to change, modify or discontinue systems, specifications and accessories of all products at any time without notice or obligation to purchaser.



see us at
Sweets.com

