

Description: SCISSORLOC V-HEX AR

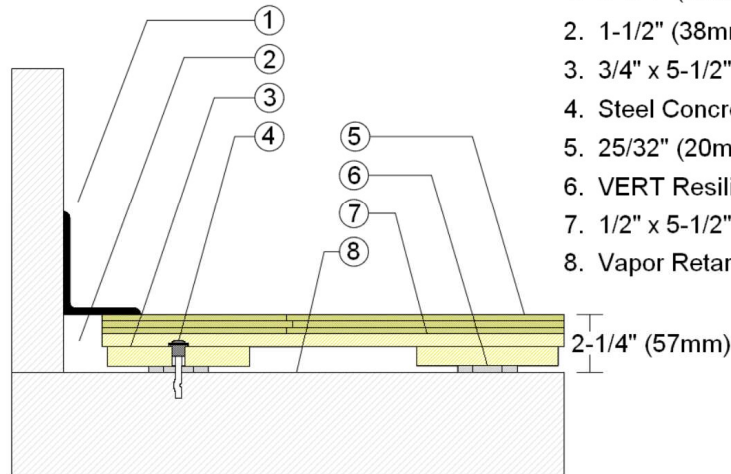
Resilience: 1/4" (6mm) VERT pads

Drawn By: RR | Date: 2/1/22

Revisions

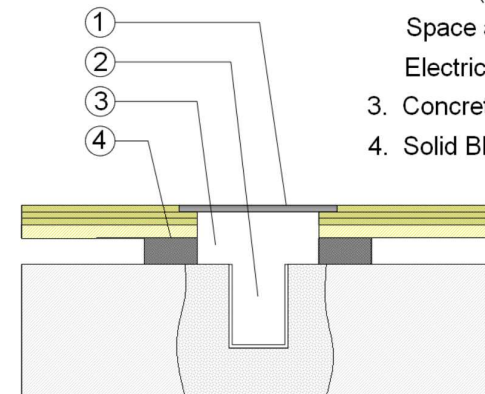
ID	Description	By	Date

### WALLBASE



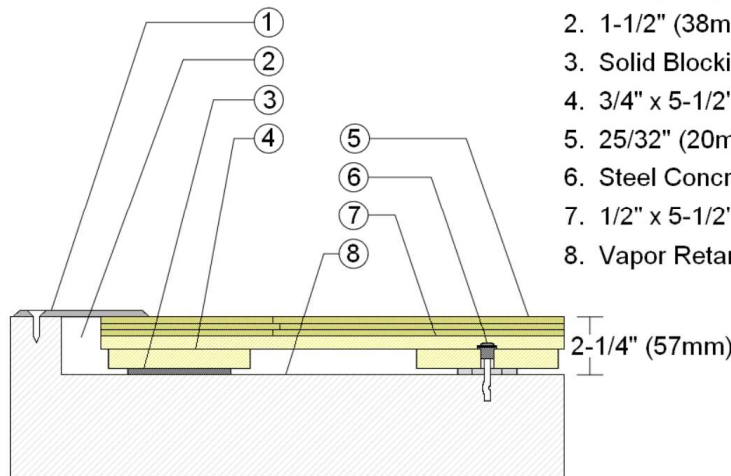
1. 3" x 4" (76mm x 101mm) Vent Cove Base
2. 1-1/2" (38mm) min. Expansion Space
3. 3/4" x 5-1/2" (19mm x 140mm) Sleeper
4. Steel Concrete Anchor and Bushing
5. 25/32" (20mm) MFMA Maple Flooring
6. VERT Resilient Pad
7. 1/2" x 5-1/2" (12mm x 140mm) Subfloor Layer
8. Vapor Retarder

### EQUIPMENT



1. Floor Plate
2. 1-1/2" (38mm) Expansion Space at all Inserts and Electrical Penetrations
3. Concrete Floor Penetration
4. Solid Blocking at Insert

### THRESHOLD



1. 1/4" (6mm) Aluminum Threshold
2. 1-1/2" (38mm) min. Expansion Space
3. Solid Blocking
4. 3/4" x 5-1/2" (19mm x 140mm) Sleeper
5. 25/32" (20mm) MFMA Maple Flooring
6. Steel Concrete Anchor and Bushing
7. 1/2" x 5-1/2" (12mm x 140mm) Subfloor Layer
8. Vapor Retarder