

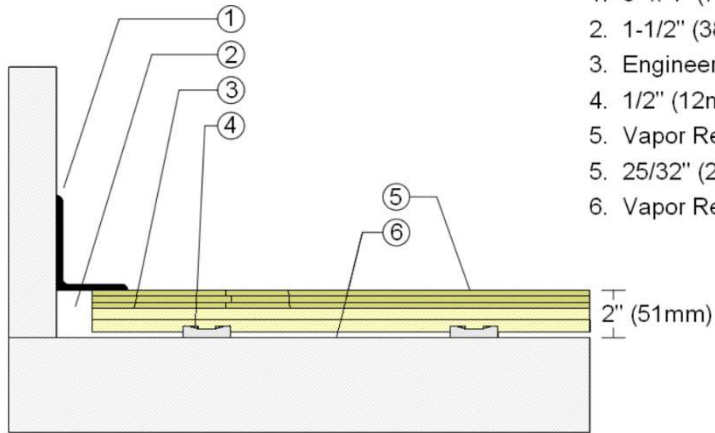


INFINITY
Wood Floors



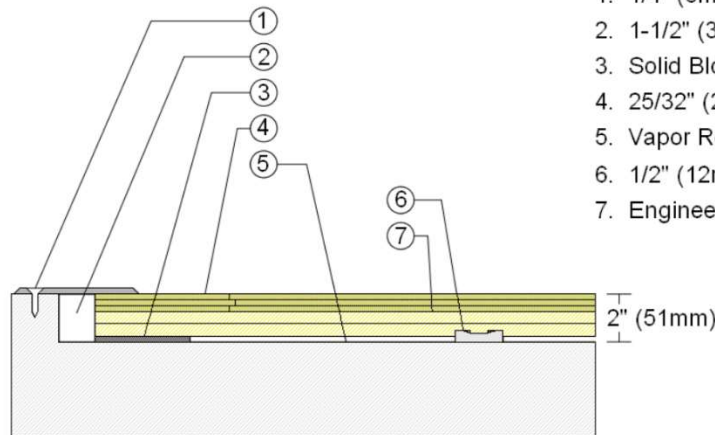
AACER
SPORTS FLOORING

WALLBASE



1. 3" x 4" (76mm x 101mm) Vent Cove Base
2. 1-1/2" (38mm) min. Expansion Space
3. Engineered MultiStage Subfloor
4. 1/2" (12mm) ECO Resilient Pad
5. Vapor Retarder
5. 25/32" (20mm) MFMA Maple Flooring
6. Vapor Retarder

THRESHOLD



1. 1/4" (6mm) Aluminum Threshold
2. 1-1/2" (38mm) min. Expansion Space
3. Solid Blocking at Doorway
4. 25/32" (20mm) MFMA Maple Flooring
5. Vapor Retarder
6. 1/2" (12mm) ECO Resilient Pad
7. Engineered MultiStage Subfloor

Description: MULTISTAGE

Resilience: 1/2" (12mm) ECO pads

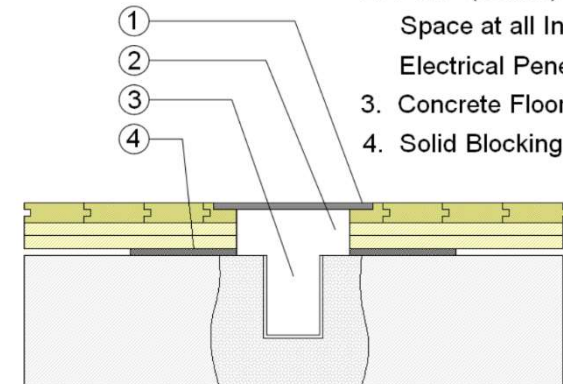
Drawn By: RR

Date: 1/1/23

Revisions

ID	Description	By	Date

EQUIPMENT



1. Floor Plate
2. 1-1/2" (38mm) Expansion Space at all Inserts and Electrical Penetrations
3. Concrete Floor Penetration
4. Solid Blocking at Insert