

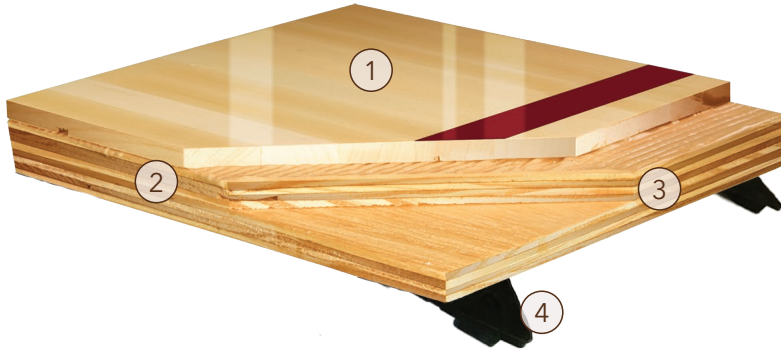
SuperBond™ Flex

FIXED SYSTEM



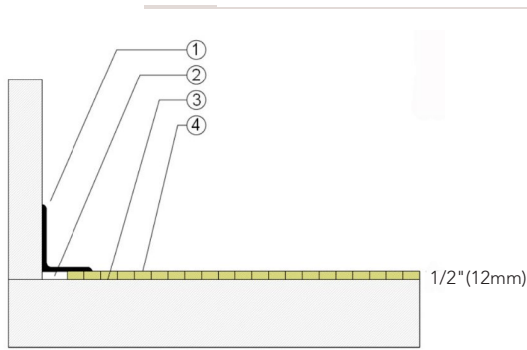
SuperBond™ Flex is a mastic set edge-grain maple parquet adhered to a floating subfloor system. Used in sport floor applications where system height is a factor.





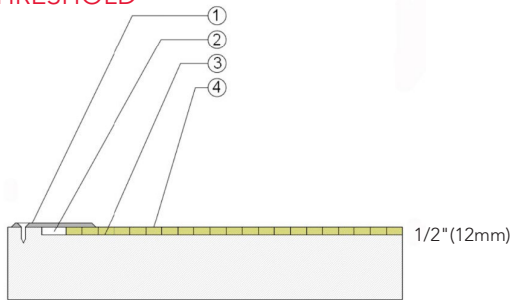
- 1. 1/2" (12mm) Acer Maple SuperBond™ Flooring
- 2. Elastomeric Glue
- 3. (2) Layers of 15/32" (12mm) NOM. Exposure 1, APA Rated Sheathing
- 4. 3/4" (19mm) TriPower™ Pads

WALLBASE



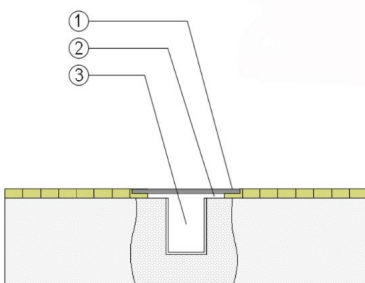
- 1. 3" x 4" (76mm x 101mm) Vent Cove Base
- 2. 1-1/2" (38mm) Min. Expansion Space
- 3. Elastomeric Adhesive
- 4. 7/16" (11mm) Acer MFMA Maple Flooring

THRESHOLD



- 1. 1/4" (6mm) Aluminum Threshold
- 2. 1-1/2" (38mm) Min. Expansion Space
- 3. Elastomeric Adhesive
- 4. 7/16" (11mm) Acer MFMA Maple Flooring

EQUIPMENT



- 1. Floor Plate
- 2. 1-1/2" (38mm) Min. Expansion Space at all Inserts & Electrical Penetrations
- 3. Concrete Floor Penetration

Certified



Green Status and LEED Contributors



- FSC® Certified Maple - MR
- FSC® Certified Subfloor Components - MR
- Environmental Quality - EQ
- Regional Materials - MR

Resilience

3/4" (19mm) TriPower™ Pads
*Other pad options available

Slab Depression

- 1/2" (12mm) Flooring - 2-1/4" (57mm)

Subfloor Construction

Plywood

System Type

Floating

Testing Laboratory Partners



It is the policy of Aacer Sports Flooring to continuously improve its line of products. Therefore, Aacer Sports Flooring reserves the right to change, modify or discontinue systems, specifications and accessories of all products at any time without notice or obligation to purchaser.