

Description: SUPERBOND FLEX

Resilience: 1/2" (12mm) ECO pads

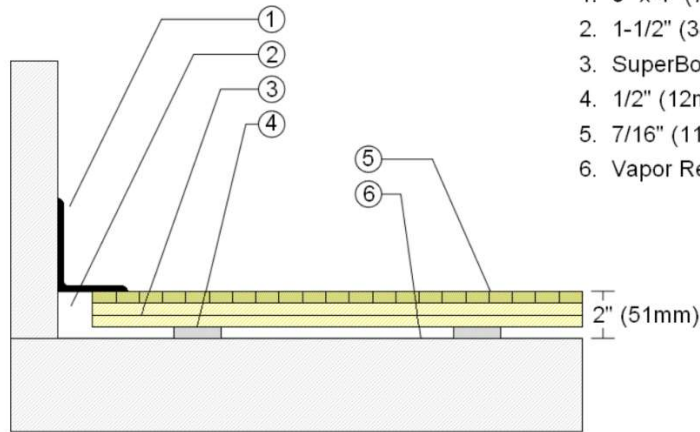
Drawn By: RR

Date: 1/1/2025

Revisions

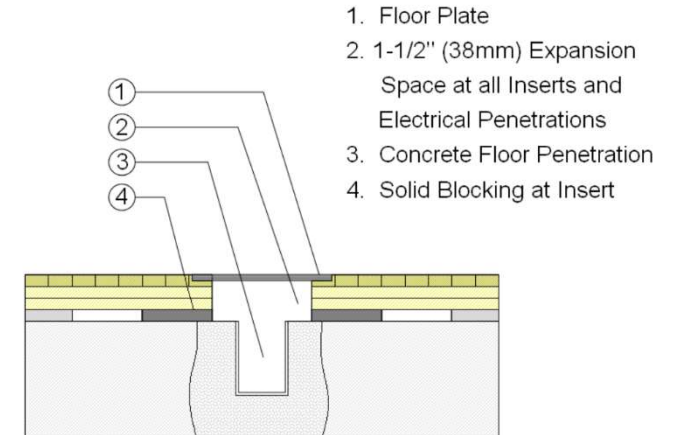
| ID | Description | By | Date |
|----|-------------|----|------|
| | | | |
| | | | |

WALLBASE



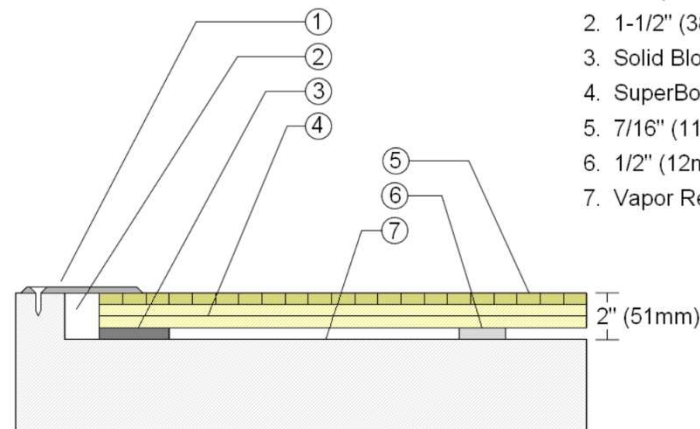
1. 3" x 4" (76mm x 101mm) Vent Cove Base
2. 1-1/2" (38mm) min. Expansion Space
3. SuperBond Flex Plywood Subfloor Panels
4. 1/2" (12mm) ECO Pad
5. 7/16" (11mm) Maple Flooring
6. Vapor Retarder

EQUIPMENT



1. Floor Plate
2. 1-1/2" (38mm) Expansion Space at all Inserts and Electrical Penetrations
3. Concrete Floor Penetration
4. Solid Blocking at Insert

THRESHOLD



1. 1/4" (6mm) Aluminum Threshold
2. 1-1/2" (38mm) min. Expansion Space
3. Solid Blocking at Doorway
4. SuperBond Flex Plywood Subfloor Panels
5. 7/16" (11mm) Maple Flooring
6. 1/2" (12mm) ECO Pad
7. Vapor Retarder