

AacerFlex™ VLP TP

FLOATING SYSTEM



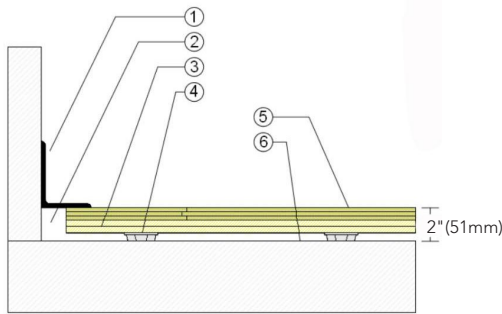
AacerFlex II TP pre-assembled subfloor panels including highly resilient TriPower pads offering a hardwood sports floor having been tested and shown to have met the most stringent athletic floor performance standard.





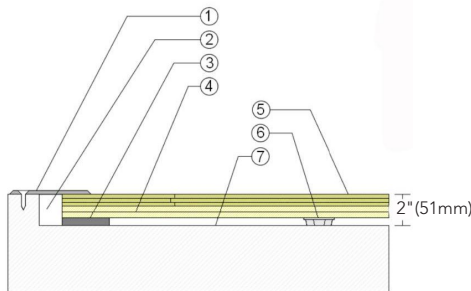
- 1. Precision-milled Acer Maple
- 2. AcerFlex II Plywood Subfloor Panels
- 3. 1/2" (12mm) TriPower Pad

WALLBASE



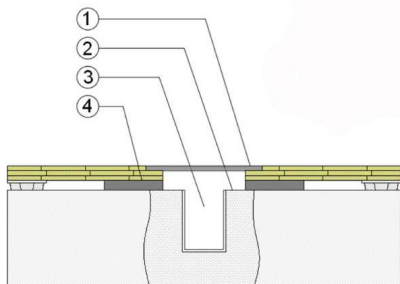
1. 3" x 4" (76mm x 101mm) Vent Cove Base
2. 1-1/2" (38mm) Min. Expansion Space
3. AcerFlex II Plywood Subfloor Panels
4. 1/2" (12mm) TriPower Pad Resilient Blanket Section
5. 25/32" (20mm) MFMA Maple Flooring
6. Vapor Retarder

THRESHOLD



1. 1/4" (6mm) Aluminum Threshold
2. 1-1/2" (38mm) Min. Expansion Space
3. Solid Blocking at Doorway
4. AcerFlex II Plywood Subfloor Panels
5. 25/32" (20mm) MFMA Maple Flooring
6. 1/2" (12mm) TriPower Pad
7. Vapor Retarder

EQUIPMENT



1. Floor Plate
2. 1-1/2" (38mm) Min. Expansion Space at all Inserts & Electrical Penetrations
3. Concrete Floor Penetration
4. Solid Blocking at Insert

Certification



Green Status and LEED Contributors



- FSC® Certified Maple - MR
- FSC® Certified Subfloor Components - MR
- Environmental Quality - EQ
- Regional Materials - MR

Resilience

1/2" (12mm) TriPower Pad

Slab Depression

- 25/32" (20mm) Flooring - 2" (51mm)

Optional AcerFlex™ II Systems

AcerFlex™ II CB
AcerFlex™ II TP

Subfloor Construction

Pre-Manufactured Panels

System Type

Floating

Testing Laboratory Partners



It is the policy of Acer Sports Flooring to continuously improve its line of products. Therefore, Acer Sports Flooring reserves the right to change, modify or discontinue systems, specifications and accessories of all products at any time without notice or obligation to purchaser.