

AacerCush I

FLOATING SYSTEM



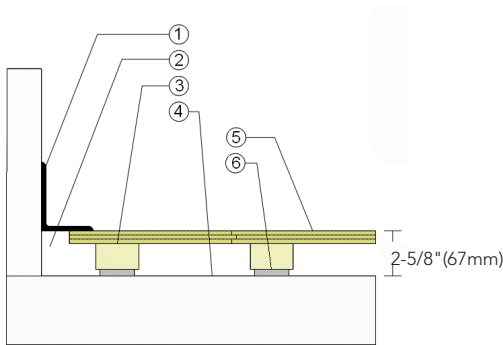
Resilience, low cost and ease of installation make AacerCush I a widely utilized athletic floor. AacerCush I is chosen for racquetball and squash courts, stage floors, gymnasiums and multipurpose rooms.





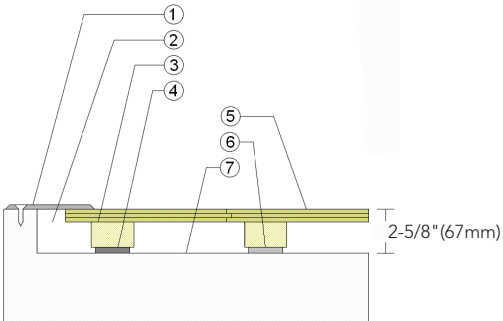
- 1. Precision-milled Acer Maple
- 2. Nom. 2" x 3" (38mm x 64mm) AcerCush Sleeper
- 3. 3/8" (10mm) AcerCush Pad

WALLBASE



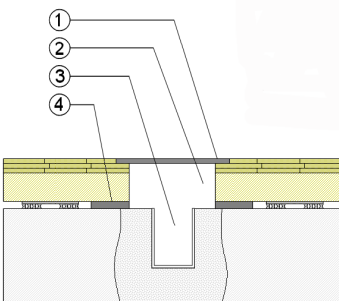
- 1. 3" x 4" (76mm x 101mm) Vent Cove Base
- 2. 1-1/2" (38mm) Min. Expansion Space
- 3. 1-1/2" x 2-1/2" (38mm x 64mm) AcerCush Sleeper
- 4. Vapor Retarder
- 5. 25/32" (20mm) MFMA Maple Flooring
- 6. 3/8" (10mm) AcerCush Pad

THRESHOLD



- 1. 1/4" (6mm) Aluminum Threshold
- 2. 1-1/2" (38mm) Min. Expansion Space
- 3. Solid Blocking at Doorway
- 4. 25/32" (20mm) MFMA Maple Flooring
- 5. 3/8" (10mm) AcerCush Pad
- 6. Vapor Retarder

EQUIPMENT



- 1. Floor Plate
- 2. 1-1/2" (38mm) Min. Expansion Space at all Inserts & Electrical Penetrations
- 3. Concrete Floor Penetration
- 4. Solid Blocking at Insert

Certified



Green Status and LEED Contributors



- FSC® Certified Maple - MR
- FSC® Certified Subfloor Components - MR
- Environmental Quality - EQ
- Regional Materials - MR

Resilience

3/8" (10mm) AcerCush Pads
*Other pad options available

Slab Depression

• 25/32" (20mm) Flooring - 2-5/8" (67mm)

Optional PowerSleeper Systems

AcerCush I+
AcerCush II
Anchored AcerCush I
Anchored AcerCush I+

Subfloor Construction

Sleeper

System Type

Floating

Testing Laboratory Partners



It is the policy of Acer Sports Flooring to continuously improve its line of products. Therefore, Acer Sports Flooring reserves the right to change, modify or discontinue systems, specifications and accessories of all products at any time without notice or obligation to purchaser.